



**ROPPE.**  
Proven. Flooring. Experiences.

# ***STAIR TREADS***

RUBBER RAISED DESIGN | SPECIALTY | VINYL

# COLORS

RUBBER & VINYL



#96 Vantage Rubber Stair Treads w/Riser, 627 Mariner



#96 Vantage Profile w/Riser, 191 Camel; #996 Vantage Design Tile, 191 Camel

As easy to install as they are to maintain, our rubber stair treads are available in the same designer colors as Roppe tile and wall base and come in a large selection of finishes, textures and gauges, including our popular Roppe Raised Design profiles.

# SOLID COLORS

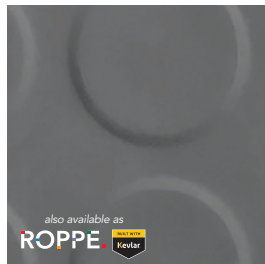
For all rubber tread profiles.

100 black	667 galactic	668 night hawk	123 charcoal	150 dark gray	177 steel blue	669 battleship	670 asphalt
175 slate	114 lunar dust	129 dolphin	178 pewter	174 smoke	671 somber	672 ashen	673 greige
193 black brown	110 brown	147 light brown	194 burnt umber	674 clove	675 biscotti	676 caribou	639 beigewood
140 fawn	677 gingerbread	678 mochaccino	679 sepia	191 camel	680 latte	632 flax	681 buff
663 aged fern	649 sweet basil	169 hunter green	682 evergreen	683 irish green	684 parsley	685 arugula	648 pear green
664 blue jay	627 mariner	686 stormy sky	687 deep fog	688 oasis	118 peacock	689 sea glass	655 peaceful blue
187 blue	139 deep navy	656 bluebell	638 cadet	197 iceberg	621 merlin	659 grape	618 aubergine
690 carob	137 cinnabar	186 red	660 citrus	188 brick	691 espresso		
692 daffodil	693 butter cup	694 parchment	122 natural	641 moonrise	170 white	695 calla lily	161 snow

**ROPPE**  
Proven. Flooring. Experiences.

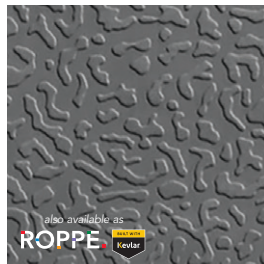
# RAISED DESIGN

RUBBER TREAD PROFILES



also available as  
**ROPPE** ROPER Kevlar

**92 Low-Profile**  
36"-72" in 6" increments



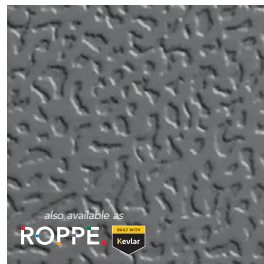
also available as  
**ROPPE** ROPER Kevlar

**93 Textured**  
36"-108" in 6" increments



also available as  
**ROPPE** ROPER Kevlar

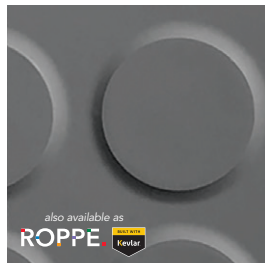
**94 Square**  
36"-108" in 6" increments



also available as  
**ROPPE** ROPER Kevlar

**95 Hammered w/Riser**  
36"-108" in 6" increments  
(95 includes adjustable nosing)

**99 Hammered w/o Riser**  
36"-108" in 6" increments  
2" tapered nose



also available as  
**ROPPE** ROPER Kevlar

**96 Vantage w/Riser**  
36"-108" in 6" increments  
**97 Vantage Extended Depth**  
36"-72" in 6" increments

**98 Vantage w/o Riser**  
36"-108" in 6" increments  
(all include relief cut)

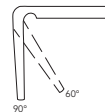
## TAPERED NOSE

Many Roppe treads have a tapered nose to provide a clean fit. They help reduce tripping hazards while providing a better finished look.



## RELIEF CUT

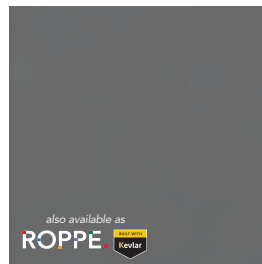
Many of our treads include a molded relief cut that aids in the installation of our treads on today's angled stairs.



Custom lengths can be ordered in 6" increments up to 9 ft. (2.73m) in Textured, Hammered, Vantage, Square and Diamond designs.

# SPECIALTY

RUBBER TREAD PROFILES

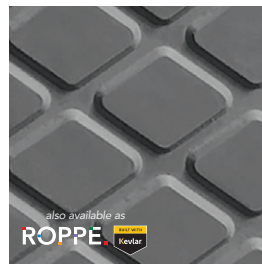


also available as  
**ROPPE** ROPER Kevlar

**60/61 Heavy-Duty (HD) Smooth**  
36"-72" in 6" increments



**70/71 Light-Duty (LD) Smooth**  
36"-72" in 6" increments



also available as  
**ROPPE** ROPER Kevlar

**30/31 Diamond**  
30 available in 36"-108" in 6" increments  
31 available in 36"-72" in 6" increments  
(30 includes relief cut)



**80/81 Rib**  
36"-72" in 6" increments



also available as  
**ROPPE** ROPER Kevlar

**40/41 Heavy-Duty (HD) Abrasive**  
36"-72" in 6" increments



**50/51 Light-Duty (LD) Abrasive**  
36"-72" in 6" increments

**ROPPE** ROPER Kevlar

Indicates also available as Rubber Treads with DuPont™ Kevlar®. See related brochure for complete details.

# COLORS

RUBBER FLOORING



#96 Vantage Raised Design Rubber Tread w/Riser, Marbleized M140 Fawn, Black Ribbed Rubber Inserts

Our PVC-free Rubber Stair Treads come in a large selection of finishes, textures and gauges, including our popular Raised Design profiles. Plus they're available in the same designer inspired colors as our rubber tile and wall base for easy coordination between product lines. Most styles offer ADA nose-compliant features, plus the treads are easy to install and maintain.

# MARBLEIZED COLORS

For all rubber tread profiles.



M100  
black



M667  
galactic



M668  
night hawk



M123  
charcoal



M150  
dark gray



M177  
steel blue



M669  
battleship



M670  
asphalt



M175  
slate



M114  
lunar dust



M129  
dolphin



M178  
pewter



M174  
smoke



M671  
somber



M672  
ashen



M673  
greige



M193  
black brown



M110  
brown



M147  
light brown



M194  
burnt umber



M674  
clove



M675  
biscotti



M676  
caribou



M639  
beigewood



M140  
fawn



M677  
gingerbread



M678  
mochaccino



M679  
sepia



M191  
camel



M680  
latte



M632  
flax



M681  
buff



M663  
aged fern



M649  
sweet basil



M169  
hunter green



M682  
evergreen



M683  
irish green



M684  
parsley



M685  
arugula



M648  
pear green



M664  
blue jay



M627  
mariner



M686  
stormy sky



M687  
deep fog



M688  
oasis



M118  
peacock



M689  
sea glass



M655  
peaceful blue



M187  
blue



M139  
deep navy



M656  
bluebell



M638  
cadet



M197  
iceberg



M621  
merlin



M659  
grape



M618  
aubergine



M690  
carob



M137  
cinnabar



M186  
red



M660  
citrus



M188  
brick



M691  
espresso



M692  
daffodil



M693  
butter cup



M694  
parchment



M122  
natural



M641  
moonrise



M170  
white



M695  
calla lily



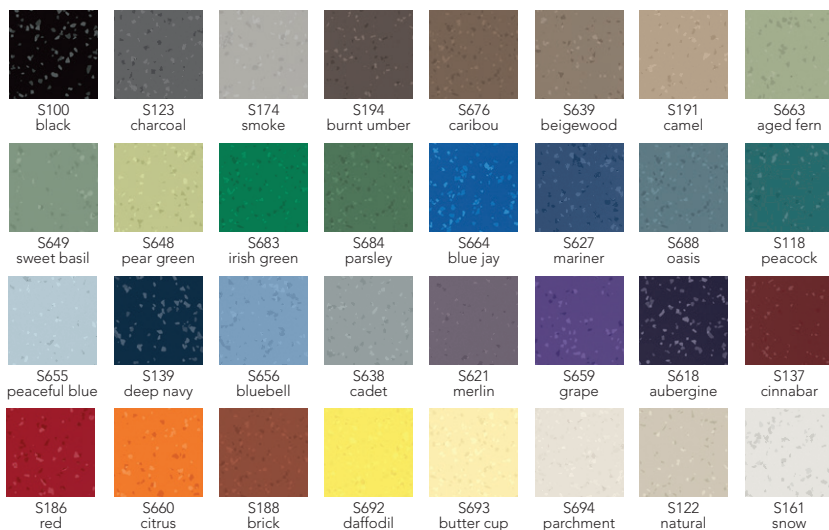
M161  
snow

# ROPPE

Proven. Flooring. Experiences.

# SYMMETRY COLORS

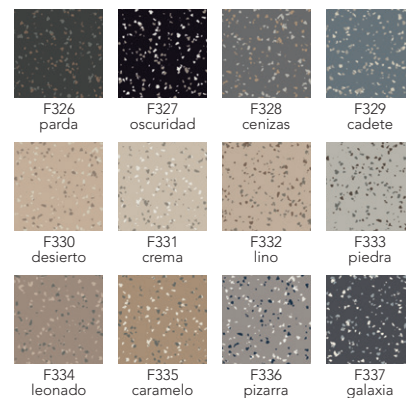
For all rubber tread profiles excluding Rib tread.



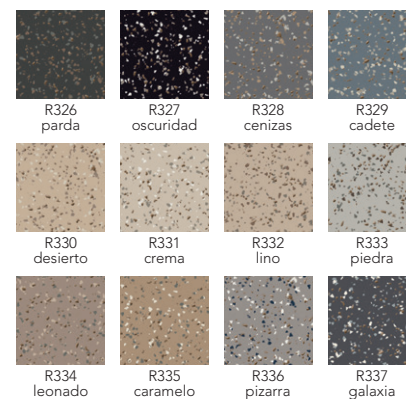
# FIESTA® COLORS

For all rubber tread profiles excluding Rib tread.

## FIESTA®



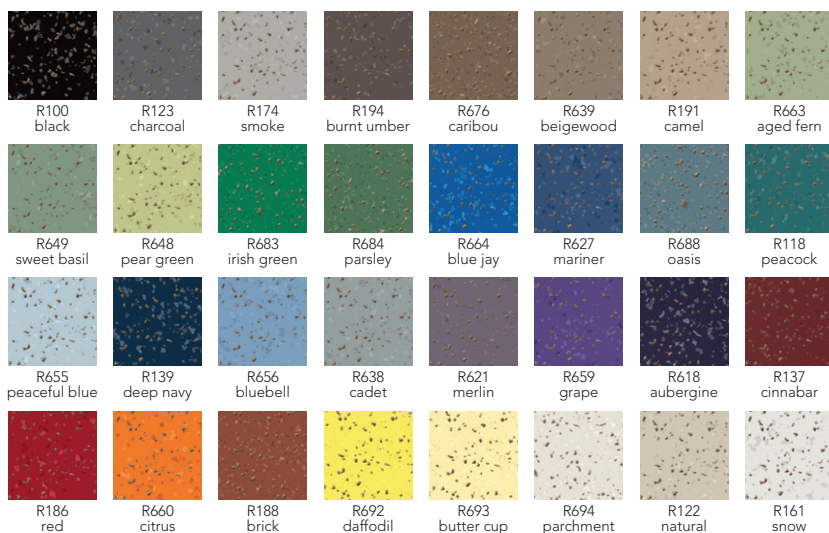
## RENEW FIESTA®



We do our very best to accurately represent the rich color palette of each of our flooring products in both printed and electronic marketing materials. However, it is recommended that a sample be requested for sign-off prior to an order being placed or a specification being written to ensure 100% satisfaction.

# RENEW COLORS

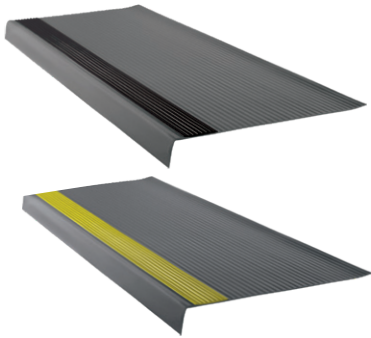
For Smooth, Hammered and Textured rubber tread profiles.



## RUBBER INSERTS

Rubber inserts are **not available** for the following:

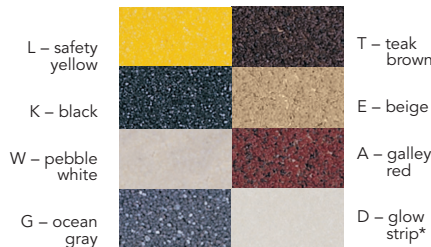
- Rubber treads #40/41, #50/51, #70/71 and #80/81
- Vinyl treads #16/17



Designed for use in our rubber or vinyl stair tread lines, ribbed or smooth rubber inserts provide a tactile surface that's durable and easy to clean. The low-profile ribbed surface, or smooth option, are available in 2" strips and offered in colors that coordinate with many of our other product lines.

## FOR VISUALLY IMPAIRED

Designed to improve safety for the visually impaired, Roppe stair treads are available with grit strips and in contrasting colors. In addition, rubber detectable warning tiles help signal changes in elevation. Available in 3/4" or 2" width.



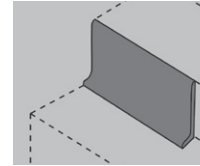
\*Glow Strips are **not available** for the following:

- Rubber treads #40/41, #50/51, #70/71 and #80/81
- Vinyl treads #16/17 and #18/19

## TREAD ACCESSORIES

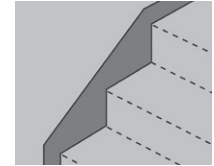
Coordinating rubber risers, stringers and landing mats/tiles do not feature the addition of DuPont™ Kevlar® Fiber since the standard formulation shares a life-cycle of approximately 40-years. There is no need to have a formula that is more durable.

### RUBBER & VINYL RISERS



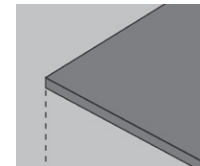
Risers cover the rear edge of tread to eliminate labor-intensive hand trimming. They are sized to fit most stair risers, but can be trimmed to fit any height (7" or less) or length. Risers are available in 7" x 50" vinyl coils and 7" x coordinating rubber tread length pieces. All risers are .100" thick. Coordinating colors for each tread line are available at a Single Price Point.

### RUBBER & VINYL STRINGERS



Stringers are available in 10" x 50" vinyl and 10" x 72" or 12" x 72" rubber, and in all of the colors in coordinating tread lines at a Single Price Point. Stringers are .080" thick.

### RUBBER LANDING MATS/TILES



Note: Rubber warning tiles can be used to alert the visually impaired to approaching stairways. Size: 1/8" gauge, 12" x 12" tiles. In addition, all Roppe 50cm tiles can be used on landings. Diamond and Smooth landing mats are available in 27" x 27", plus 36" x 36" in Smooth.

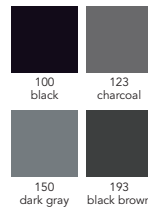
smooth and diamond landing mats



### PERFORMANCE COMPOUNDS

Roppe Performance Compound Rubber Stair Treads are homogenous rubber treads specifically designed for use in areas that may be subject to oil, grease and other petroleum hydrocarbons. Ideal applications include automotive (repair shops, quick lube facilities and automobile storage), industrial (manufacturing facilities, refining facilities and material storage) and transportation (repair facilities, garages and equipment storage).

Roppe Performance Compound Rubber Stair Treads are **only available** in the following solid colors:



# VINYL TREADS

## VINYL TREADS PROFILES



#18 Heavy-Duty Vinyl Tread,  
Vinyl Riser, 191 Camel

Our vinyl stair treads deliver durability and affordability without sacrificing the good looks and quality that you expect from Roppe. Available in heavy-duty and light-duty profiles, each offering square and round nose options. A refreshed color palette allows these treads to coordinate with tile and base lines for a more cohesive design even on a budget.

- Coordinating risers and stringers available.
- Abrasive strips can be added to all styles (\*Glow Strips are not available for #16/17). Ribbed or smooth rubber inserts can be added to #18/19.
- Color line is consistent with the Ready Base line of wall base that can be specified on budget-conscious jobs.



### 16/17 Light-Duty (LD) Rib

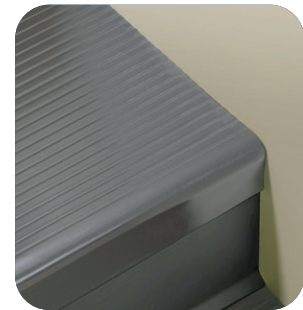
42", 48" and 72";  
abrasive strips only



### 18/19 Heavy-Duty (HD) Rib

42", 48" and 72";  
abrasive strips or  
ribbed/smooth inserts

*Other lengths available, minimum order requirements apply.*



#17 Light-Duty Vinyl Tread,  
Vinyl Riser, 177 Steel Blue

*Other Roppe colors  
available, minimum order  
requirements apply.*

# STAIR TREADS

RUBBER RAISED DESIGN | SPECIALTY

VINYL STAIR TREADS



## Rubber Stair Treads

Free of Red List chemicals, PVC, phthalates and halogens. The ReNew palette is also cork-infused and contains 13% bio-based content from rapidly renewable resources.



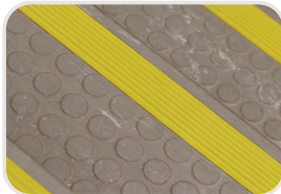
## Vinyl Stair Treads

Formulation is bio-based phthalate free, from a rapidly renewable resource, and 4-6% pre-consumer waste.



## Sustainable Solutions

Made in the U.S.A. and meets FloorScore®, NSF332 Platinum and CHPS criteria. Rubber Stair Treads and Rubber Stair Treads with DuPont™ Kevlar® meet GREENGUARD GOLD criteria.



## Safety Inserts and Strips

Safety abrasive strips standard on some product lines. Ribbed or smooth rubber inserts and custom strips also can be added for extra traction or to aid the visually impaired. Available with self-illuminating photo-luminescent abrasive glow strips for added safety in darkened conditions.



## Variety of Profiles

Available in nine different Rubber Stair Tread profiles, two Vinyl Stair Tread Profiles and a variety of lengths. For Rubber Treads, custom lengths can be ordered in 6" increments up to 9 ft. (2.73m) in Textured, Hammered, Vantage, Square and Diamond designs.



## Single Price Point

All colors available at a Single Price Point within your selected palette. ReNew palette is available in Smooth, Hammered and Textured profiles only. Vinyl Treads available in 15 colors; other Roppe colors available, minimum order requirements apply.



Installation



Roppe products are easy to install & maintain using our Excelsior™ Products. Visit [roppe.com](http://roppe.com) for the most current recommendations.



Maintenance

Find the most current lineup of Roppe product folders online at [roppe.com](http://roppe.com).



Digital Folders

**ROPPE**  
Proven. Flooring. Experiences.



**Sustainable Minds**

**ROPPE UNIVERSITY**



Health Product Declaration® for Rubber Stair Treads is available at [roppe.com](http://roppe.com)



Health Product Declaration® for Vinyl Stair Treads is available at [roppe.com](http://roppe.com)

proudly made in the **USA**

78-671 9/23