

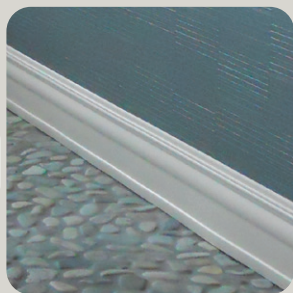


**ROPPE.**  
Proven. Flooring. Experiences.

**CONTOURS**  
PROFILED WALL BASE SYSTEM®

# CONTOURS

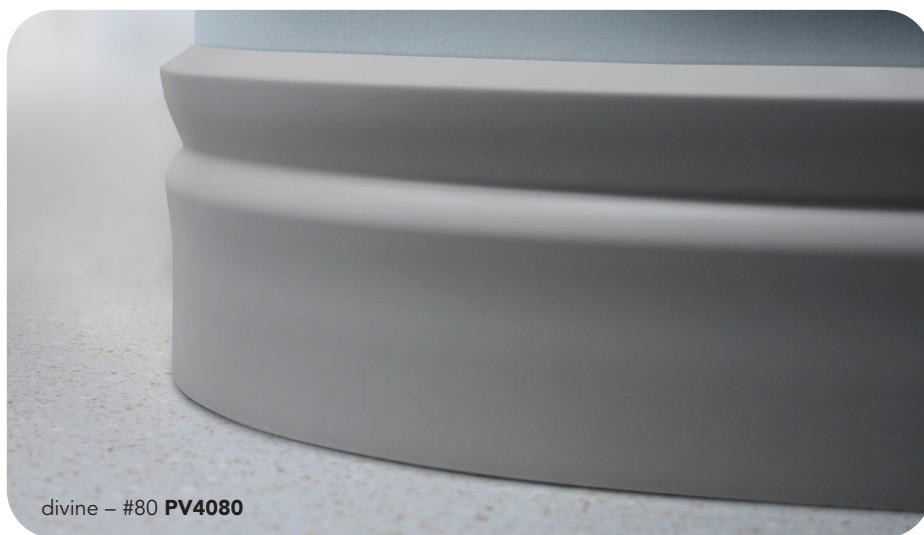
PROFILED WALL BASE SYSTEM®



novel – #45 **PV4045**

Architectural details, such as wood trim, are becoming prevalent in commercial design. However, the details such as nailing, filling and finishing are labor intensive and costly. Contours Profiled Wall Base System™ offers the look of wood base with the enhanced properties resilient base touts such as resistance to chipping, absorbing moisture or splintering. Contours can also mask irregular surfaces and wrap around gentle curves. Contours installs easily and saves money and time during installation and over the life of the project.

100 black	123 charcoal	150 dark gray	669 battleship	175 slate	114 lunar dust	129 dolphin	178 pewter
174 smoke	671 somber	672 ashen	673 greige	193 black brown	110 brown	147 light brown	194 burnt umber
675 biscotti	639 beigewood	140 fawn	677 gingerbread	678 mochaccino	191 camel	632 flax	691 espresso
694 parchment	122 natural	641 moonrise	170 white	695 calla lily	161 snow		



divine – #80 **PV4080**

**ROPPE**  
Proven. Flooring. Experiences.

serenity – #10 **PV4010**

simplicity bold – #05 **PV4005**



intrigue – #90 **PV5090**



novel – #45 **PV7045**



fashion – #85 **PV6085**



# CONTOURS

PROFILED WALL BASE SYSTEM®

*Profiles shown approximately actual size.*



novel – #45 **PV4045**



#55

nobility

PV5055

profile height  
5-1/2"

packaged  
5-8' pcs./ctn.  
40 linear ft./ctn.

3/8" thickness

#90

intrigue

PV5090

profile height  
5-1/2"

packaged  
8-8' pcs./ctn.  
64 linear ft./ctn.

3/8" thickness

#90

intrigue

PV4090

profile height  
4"

packaged  
8-8' pcs./ctn.  
64 linear ft./ctn.

3/8" thickness

#10

serenity

PV4010

profile height  
4"

packaged  
14-8' pcs./ctn.  
112 linear ft./ctn.

1/4" thickness



simplicity – #00 **PV4000**



candid – #60 **PV3060**



#00

simplicity

PV4000

profile height  
4"

packaged  
15-8' pcs./ctn.  
120 linear ft./ctn.  
1/4" thickness

#05

simplicity bold

PV4005

profile height  
4-1/2"

packaged  
5-8' pcs./ctn.  
40 linear ft./ctn.  
1/2" thickness

#60

candid

PV4060

profile height  
4-1/4"

packaged  
6-8' pcs./ctn.  
48 linear ft./ctn.  
3/8" thickness

#60

candid

PV3060

profile height  
3"

packaged  
5-8' pcs./ctn.  
40 linear ft./ctn.  
3/8" thickness

#45

novel

PV7045

profile height  
7-3/4"

packaged  
6-8' pcs./ctn.  
48 linear ft./ctn.  
1/4" thickness



#45

novel

PV4045

profile height  
4-1/2"

packaged  
6-8' pcs./ctn.  
48 linear ft./ctn.

3/8" thickness

#85

fashion

PV6085

profile height  
6-1/4"

packaged  
5-8' pcs./ctn.  
40 linear ft./ctn.

1/4" thickness

#85

fashion

PV4085

profile height  
4-1/4"

packaged  
8-8' pcs./ctn.  
64 linear ft./ctn.

1/4" thickness

#65

vertical

PV6065

profile height  
6"

packaged  
4-8' pcs./ctn.  
32 linear ft./ctn.

3/8" thickness





divine – #80 **PV4080**



valiant – #70 **PV4070**

#65

vertical

PV4065

profile height  
4-5/8"

packaged  
5-8' pcs./ctn.  
40 linear ft./ctn.

3/8" thickness

#65

vertical

PV3065

profile height  
3"

packaged  
5-8' pcs./ctn.  
40 linear ft./ctn.

3/8" thickness

#80

divine

PV4080

profile height  
4-1/2"

packaged  
5-8' pcs./ctn.  
40 linear ft./ctn.

1/2" thickness

#70

valiant

PV4070

profile height  
4-1/2"

packaged  
5-8' pcs./ctn.  
40 linear ft./ctn.

1/2" thickness

#350

quarter round

C350V / 350V

profile height  
1/2"

C350V > 40' coil  
350V > 10-12' pcs./  
120' per ctn.

1/2" thickness

# CONTOURS

PROFIED WALL BASE SYSTEM®



## Bio-Based and Phthalate-Free

Durable TP rubber compound contains bio-based phthalate-free plasticizer, from a rapidly renewable resource.



## Sustainable Solutions

Made in the U.S.A. and meets FloorScore®, NSF/ANSI 332 Level 1 and CHPS criteria.



## Variety of Heights and Profiles

Available in 17 profiles with heights ranging from 3" to 7-3/4" plus a quarter round option.



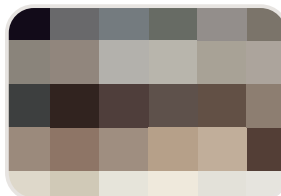
## Natural Flexibility

Natural flexibility conceals irregularities in floors, walls and corners (e.g., seam of floor and wall, bowing walls, etc.), and allows for installing around architectural curves. Satin finish provides the look of custom-crafted woodwork.



## Corner Block Profiles

Roppe Rubber Corner Blocks and Micro Corners offer a simplified corner solution available for inside and outside corners in two profiles that install within minutes with standard tools.



## Single Price Point

All colors are inherent throughout and available at a Single Price Point. Other Roppe colors and custom colors available, minimums apply.



Installation



**excelsior™**

Roppe products are easy to install & maintain using our Excelsior™ Products. Visit [roppe.com](http://roppe.com) for the most current recommendations.



Maintenance



Digital Folders

Find the most current lineup of Roppe product folders online at [roppe.com](http://roppe.com).

**ROPPE**  
Proven. Flooring. Experiences.



Sustainable  
Minds™

**ROPPE** UNIVERSITY



Health Product  
Declaration®  
is available at  
[roppe.com](http://roppe.com)

proudly made in the  
**USA**

40-671 2/25