



ROPPE.
Proven. Flooring. Experiences.

ENVIRE®/FLASHCOVE™
RUBBER SHEET AND TILE

ENVIRE®

RUBBER SHEET AND TILE

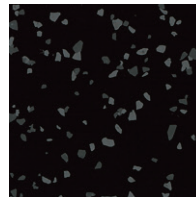


Envire® Rubber Sheet,
S174 Smoke, S161 Snow,
S123 Charcoal,
S194 Burnt Umber

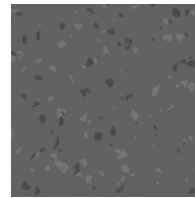
Envire® Rubber Sheet and Tile was developed for use in high traffic areas that require natural resilience, exceptional wear resistance and dimensional stability. Performs well where small-wheeled traffic may be present such as healthcare or institutional facilities, retail stores and schools. Ideal for use in classrooms, corridors, multi-purpose areas, municipal and government buildings, clean rooms, showrooms, shopping malls, theaters, convention centers, air/bus/train terminals, elevators, lobbies and stair landings.

ENVIRE® SPECS

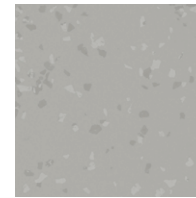
Roll Size	74"W x 50'L
Tile Size	24" x 24"
Gauge	.100" (2.5 mm)
Surface	Smooth



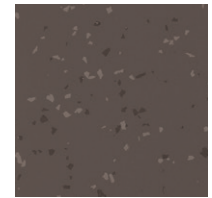
S100
black



S123
charcoal



S174
smoke



S194
burnt umber



S649
sweet basil



S648
pear green



S683
irish green



S684
parsley



S655
peaceful blue



S139
deep navy



S656
bluebell



S638
cadet



S186
red



S660
citrus



S188
brick



S692
daffodil

RUBBER WELDING BEADS

Ensure proper fit, finish and appearance by using rubber welding bead in areas that require ongoing and comprehensive wet cleaning and where maintaining proper hygiene is essential. Rubber Welding Beads are available in 200l/f spools.

RUBBER WELDING BEADS COLORS

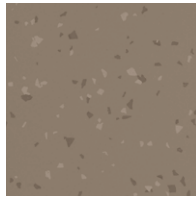
100 black	684 parsley	618 aubergine
123 charcoal	664 blue jay	137 cinnabar
174 smoke	627 mariner	186 red
194 burnt umber	688 oasis	660 citrus
676 caribou	118 peacock	188 brick
639 beigewood	655 peaceful blue	692 daffodil
191 camel	139 deep navy	693 buttercup
663 aged fern	656 bluebell	694 parchment
649 sweet basil	638 cadet	122 natural
648 pear green	621 merlin	161 snow
683 irish green	659 grape	

FLASHCOVE™

PREFABRICATED BASES



S676
caribou



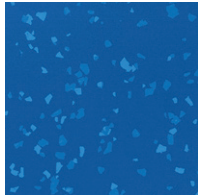
S639
beigewood



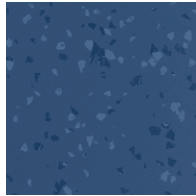
S191
camel



S663
aged fern



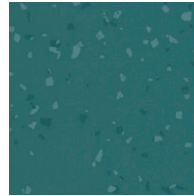
S664
blue jay



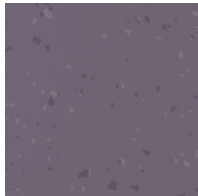
S627
mariner



S688
oasis



S118
peacock



S621
merlin



S659
grape



S618
aubergine



S137
cinnabar



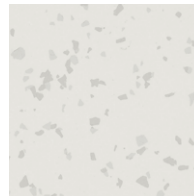
S693
butter cup



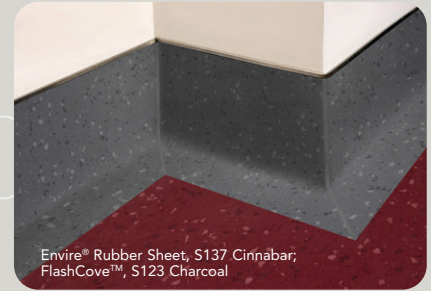
S694
parchment



S122
natural



S161
snow



With the introduction of FlashCove™ – partnered with our Envire® Rubber Sheet product and our Excelsior™ line of floor prep, installation and maintenance items – Roppe can now offer a complete system and a confidence in each installation that is unmatched in the industry.

When hygiene matters, FlashCove™ is the only based guaranteed to perform. FlashCove™ Prefabricated Bases arrive on site with a bonded aluminum reinforcing backer that strengthens the weakest part of the base. Where site-formed bases are prone to punctures during maintenance and use, thus compromising hygiene, FlashCove™ Bases are guaranteed to stay puncture-proof for life.



FlashCove™
PREFABRICATED BASES INC.

ROPPE
Proven. Flooring. Experiences.

ENVIRE® / FLASHCOVE™

RUBBER SHEET AND TILE



Red List Chemical Free

Free of Red List chemicals, PVC, phthalates, and halogens. High performance compound developed for durability while still providing comfort under foot.



Sustainable Solutions

Made in the U.S.A. and meets GREENGUARD GOLD, FloorScore®, NSF/ANSI 332 Level 1 and CHPS criteria.



Easy Maintenance

Envire® offers efficient & economical maintenance solutions that do not require the application of finishes. Simply buffing to a desired shine level is recommended.



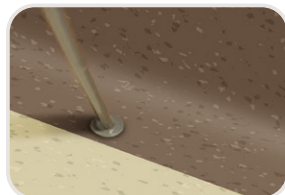
Installation



Roppe products are easy to install & maintain using our Excelsior™ Products. Visit roppe.com for the most current recommendations.

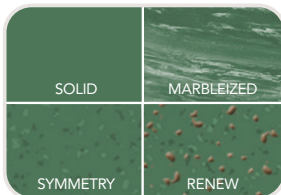


Maintenance



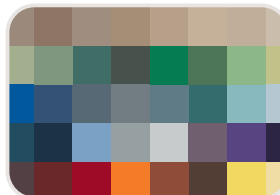
Meets Daily Demands

FlashCove™ Prefabricated Wall Base delivers strong performance against maintenance machines and point loads, such as chairs and portable equipment. Maintenance equipment can get closer to the wall for more thorough cleaning.



Coordinating Palettes

Versatile palette allows for product coordination with our other tile, tread, wall base and accessory products. Available in our Symmetry palette, a unique flecked design of tonal rubber chips, helps hide dirt and debris between cleanings.



Single Price Point

All color options available at a Single Price Point. (Custom colors are available; minimum quantities may apply.)



Digital Folders

Find the most current lineup of Roppe product folders online at roppe.com.



Health Product Declaration® for Envire® is available at roppe.com



41-671 2/25