

metal treads



proudly made in the


ROPPE.
Proven. Flooring. Experiences.



metal treads

Constructed of heat-treated exterior-grade aluminum (6063T3), Roppe Metal Stair Treads are ideal for installation over both commercial and residential steps and landings.

ROPPE
Proven • Flooring • Experiences

metal treads



black - BLK



yellow - YLW



blue - BLU



brown - BRN



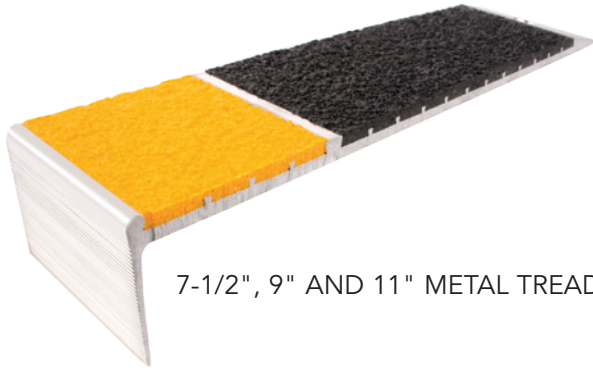
red - RED



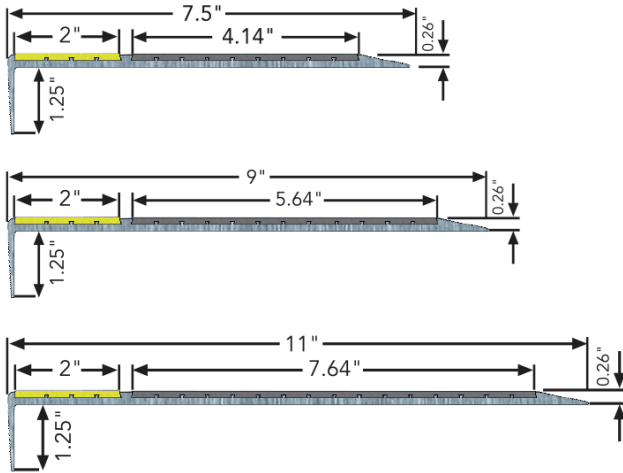
green - GRN



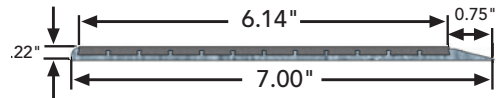
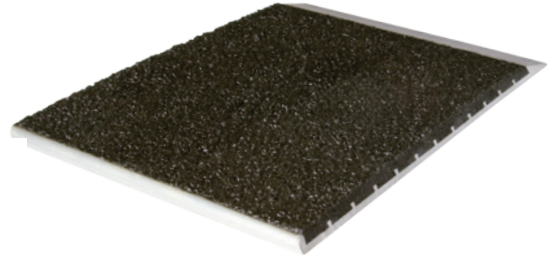
gray - GRY



7-1/2", 9" AND 11" METAL TREADS

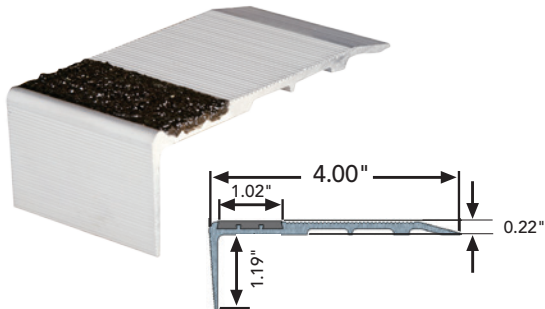


7" METAL PLATE

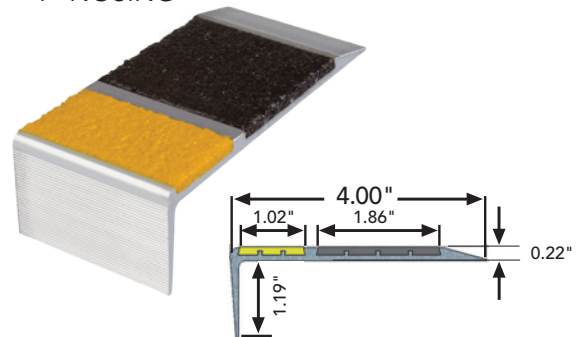


Roppe Metal Stair Treads are ideal for installation over both commercial and residential steps and landings.

4" NOSING



4" NOSING



metal treads

Q6 quicksix



- Constructed of heat-treated exterior-grade aluminum 6063T3, with an epoxy filled face increases slip resistance and is resistant to marring, scratching and chipping.
- Meet ADA guidelines for the visually impaired when contrasting colors are selected.
- Factory pre-drilled and countersunk holes for a flush finish with mechanical fasteners.
- Stocked in 9" nominal depths and 36" and 48" lengths. 7-1/2" and 11" nominal depths available by special order.
- 7" plate and 4" nosings are also available.
- Available in seven (7) colorfast solid colors or two-color combinations. Select from: Black, Red, Yellow, Green, Blue, Gray or Brown and are all available at a Single Price Point. Custom color matching is available and ideal to show off school or corporate branding colors.

Approved Adhesives

- Premium, Exterior Grade Polyurethane Adhesive

Approved Fasteners

- #10 Wood Decking Screws
- #10 Self-Tapping Concrete Screws
- #10 Stainless Steel Machine Screws
- #10 Stainless Steel Bolts & Nuts

ROPPE
Proven Flooring Experiences

1.800.537.9527 | www.roppe.com

 **ecoScorecard**

Your link to Roppe products and LEED® documentation.
For more information, please visit: roppe.com.

 **ecomedes**

Your link to Roppe products and product documentation
for LEED, LBC, WELL, GreenGlobes Rating Systems as
well as Federal Standards.



Explore your options
with our online
FLOORING DESIGNER
at roppe.com

ROPPE 
UNIVERSITY



proudly made in the


94-671 5/17