



**ROPPE.**  
Proven. Flooring. Experiences.

**NORTHERN TIMBERS**  
PREMIUM VINYL WOOD PLANK

# NORTHERN TIMBERS

PREMIUM VINYL WOOD PLANK



Northern Timbers, 276 Vellum Sawcut Oak, 277 Roasted Sawcut Oak; Northern Parallels Travertine, 292 Palermo

Roppe's Northern Timbers harmonize nature's best flooring options with today's technology to create beautiful floors that are environmentally friendly and fully recyclable. Northern Timbers offer timeless grains and hues that complement many design styles and textures. Northern Timbers Loose-Lay offers a 20-year residential and 7-year commercial warranty (no rolling loads).

On the Cover: Northern Timbers, 281 Whitewashed Oak, 272 Lined Beige Oak, 037 Ash Walnut

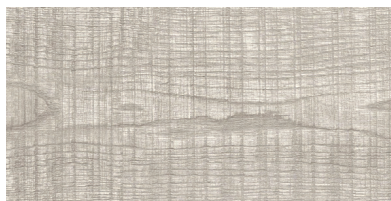
**ROPPE**  
Proven. Flooring. Experiences.



**L** 273 limed pale oak



**L** 271 limed silver oak



276 vellum sawcut oak

**L** LOOSE-LAY OPTION AVAILABLE  
6" x 48" x 3/16" (5mm)  
28 mil wear layer

## NORTHERN TIMBERS / LOOSE-LAY

Size: 4" x 36" (101.6 mm x 914.4 mm)  
6" x 48" (152.4 mm x 1,219.2 mm)  
6" x 48" (152.4 mm x 1,219.2 mm)  
loose-lay

Thickness: 1/8" (3 mm)  
3/16" (5 mm) loose-lay

No. per carton: 36 - 4" x 36"  
18 - 6" x 48"  
10 - 6" x 48" loose-lay

Wt. per carton: 37 lbs. (16.78kg) - 4" x 36"  
37 lbs. (16.78kg) - 6" x 48"  
37 lbs. (16.78kg) - 6" x 48" loose-lay

Sq. ft. per carton: 35.95 (3.34 sq.m) - 4" x 36"  
35.95 (3.34 sq.m) - 6" x 48"  
20.02 (1.86 sq.m) - 6" x 48" loose-lay



**L** 024 golden oak



**L** 026 gingered beech



**L** 027 tigereye zebra



**L** 029 toasted teak



272 limed beige oak



**COORDINATING ROPPE TILE, TREAD AND WALL BASE COLORS:**



122  
natural



174  
smoke



191  
camel



140  
fawn



676  
caribou



675  
biscotti



178  
pewter



150  
dark gray



194  
burnt umber



123  
charcoal



147  
light brown

proudly made in the  
**USA**



021 sandy pine



041 cocoa pine



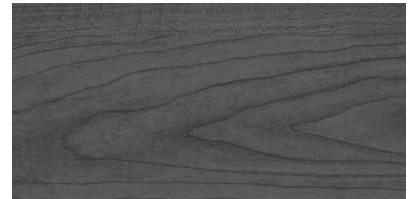
274 limed umber oak



035 bronzed oak



280 zebra mist



278 mineral cherry



**L**

040 limed gray oak



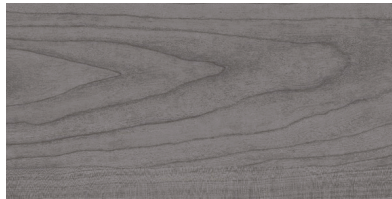
281 whitewashed oak



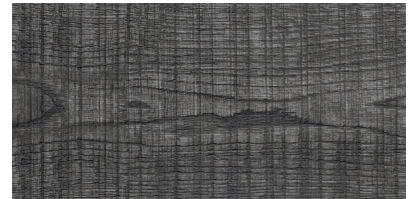
277 roasted sawcut oak



032 copper hickory



275 pewter cherry



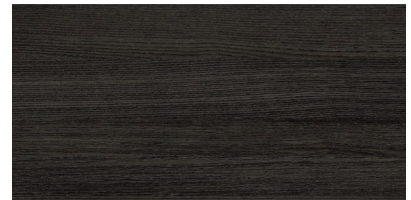
279 granite sawcut oak



037 ash walnut



045 steely ash



**L**

042 voodoo beech

We do our very best to accurately represent the rich color palette of each of our flooring products in both printed and electronic marketing materials. However, it is recommended that a sample be requested for sign-off prior to an order being placed or a specification being written to ensure 100% satisfaction.

# IMPRESSION™

LUXURY VINYL STAIR TREADS

(See inside for additional details and colors.)

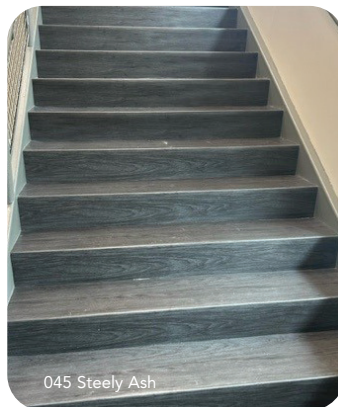
Roppe's Impression™ Luxury Vinyl Stair Treads seamlessly bridge nature's timeless beauty with cutting-edge engineering, transforming commercial spaces through purposeful stair solutions. Thoughtfully designed utilizing the authentic grains and hues of our Northern Timbers palette, these innovative treads deliver unparalleled aesthetic continuity, exceptional durability, and environmental responsibility. Each tread is a testament to sustainable design, offering fully recyclable materials that elevate spaces while providing superior performance across diverse design landscapes.

## FEATURES

- Premium construction that can be recycled after use and offer a 10-year commercial warranty. Formulated with non-phthalate plasticizers using 100% virgin materials, with over 50% of the raw materials sourced within a 100-mile radius.
- Made in the U.S.A. and meets GREENGUARD GOLD and CHPS criteria.
- Developed to seamlessly install with our 3mm/28mil (.711mm) wear layer LVT plank and tile options. C-Shield UV cured ceramic bead finish adds durability while resisting scuffs.
- Extreme durability with excellent resistance to indentation and chemicals.
- One piece tread with riser designed to break at the riser for a clean, smooth finish that is easier to maintain. Coordinating optional J-channel accessory and color matched caulk available.
- Available in five of our most popular plank options, with a VI stripe option incorporated into the film layer where necessary, at a Single Price Point.



040 Limed Gray Oak



045 Steely Ash



026 Gingered Beech



# IMPRESSION™

LUXURY VINYL STAIR TREADS

## TREAD COLOR



\_\_\_ ITXX026 Gingered Beech



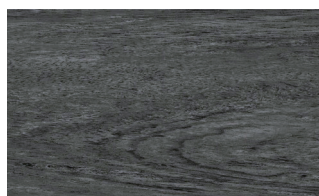
\_\_\_ ITXX029 Toasted Teak



\_\_\_ ITXX272 Lined Beige Oak

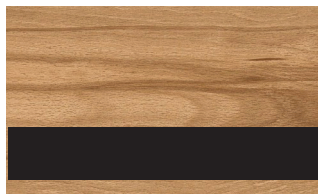


\_\_\_ ITXX040 Lined Gray Oak

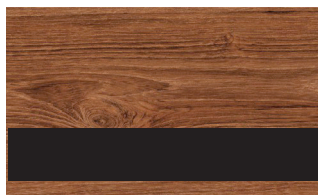


\_\_\_ ITXX045 Steely Ash

## TREAD WITH VISUAL STRIPE



V\_\_\_ ITXX026 Gingered Beech



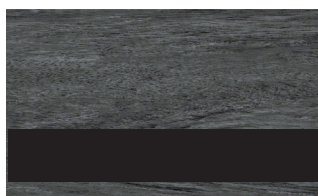
V\_\_\_ ITXX029 Toasted Teak



V\_\_\_ ITXX272 Lined Beige Oak



V\_\_\_ ITXX040 Lined Gray Oak



V\_\_\_ ITXX045 Steely Ash

Coordinating  
J-Channel &  
Colored Caulk



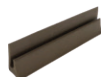
617 terracotta



623 nutmeg



191 camel



674 clove



123 charcoal

## IMPRESSION™ STAIR TREAD SPECIFICATIONS/PACKAGING

Tread Depth: 14-1/8"

Riser Height: 8-1/4"

(Depth and height  
can be trimmed to fit)

Lengths: 36" up to 108"

Packaging: 36"-72" : 7 per Package  
78"-108": 5 per Package

## TEST INFORMATION

ASTM F 1700 – Solid Vinyl Tile: Class III, Type A& B

ASTM E 648 – Critical Radiant Flux: Class I, >.45 W/cm<sup>2</sup>

ASTM E 662 – Smoke Density: Pass

ASTM D 2047 – Slip Resistance: > 0.60

ASTM F 970 – Static Load Limit: 250 PSI,  
< .005" Indentation

ASTM F 925 – Chemical Resistance: Excellent  
(chart available)

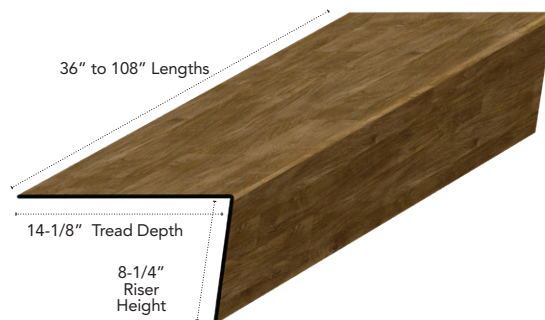
ASTM F 1515 – Light Stability: Pass

## WARRANTY

- 10-Year Commercial Warranty  
*Epoxy nose filler must be used for warranty to be valid*



proudly made in the  
 USA



# NORTHERN TIMBERS

PREMIUM VINYL WOOD PLANK



## Phthalate Free with 100% Virgin Materials

Formulated with non-phthalate plasticizers using 100% virgin materials, with over 50% of the raw materials sourced within a 100-mile radius.



## Sustainable Solutions

Made in the U.S.A. and meets GREENGUARD Gold and CHPS criteria.



## Premium Construction

Premium construction that can be recycled after use and offers a 20-year commercial warranty (Loose-Lay offers a 20-year residential and 7-year commercial warranty, no rolling loads)



Installation



**excelsior™**

Roppe products are easy to install & maintain using our Excelsior™ Products. Visit [roppe.com](http://roppe.com) for the most current recommendations.



Maintenance



## Durable Wear Layer

28 mil (.711mm) wear layer that exceeds ASTM F1700 spec for commercial use. C-Shield UV cured ceramic bead finish adds durability while resisting scuffing and traffic patterns on the surface while promoting ease of maintenance.



## Glue-Down and Loose-Lay Constructions

Nominal 1/8", 4" x 36" or 6" x 48" plank construction on glue down and 3/16" x 6" x 48" loose-lay construction helps conceal subfloor imperfections and allows for flush installation with other 1/8" and 3/16" products.



## Single Price Point

All colors available at a Single Price Point. Available in 23 colors/grains of glue-down planks and 8 colors/grains of loose-lay planks.



Digital Folders

**ROPPE**  
Proven. Flooring. Experiences.



Sustainable  
Minds™

**ROPPE** UNIVERSITY



proudly made in the  
**USA**

108-671 2/25