

#992 Low Profile Circular Tile

Manufacturer

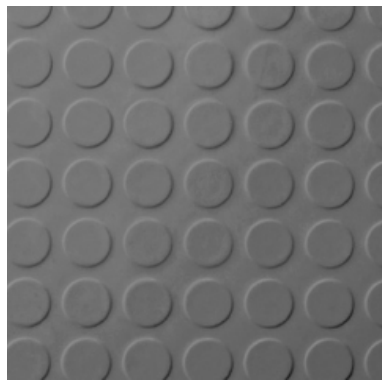
Roppe Corporation
 1602 N. Union Street
 P.O. Box 1158
 Fostoria, Ohio USA 44830-1158
 Website - www.roppe.com
 t: (419) 435.8546 tf: (800) 537.9527
 f: (419) 435.1056
 e-mail: sales@roppe.com

Product Description

Roppe Rubber Tile is a homogenous rubber tile that comes in a variety of designs and patterns. Our tiles can be mixed and matched with our treads, base and accessories. Highly durable and PVC free our rubber tiles provide an unmatched level of cost-to-life-cycle benefit.

Features

PVC Free	Does Not Require A Finish
Extremely Durable	Excellent Chemical Resistance
FloorScore® Certified	Recyclable (IMPACT Program)
Superior Slip Resistance	Qualifies for LEED® Credits



#992 Low Profile Raised Circular Design Tile

Nominal Dimensions: 19 11/16" x 19 11/16" (50 cm)
 Nominal Thickness: 1/8" (3.175 mm)
 Profile Height: 1/64" (.4 mm)
 Profile Diameter: 1-9/64" (28.97 mm)
 Carton Quantity: 16 Tiles (43 sq. ft.)
 Weight Per Carton: 42 lbs.

Square Foot Per Carton: 43 (3.99 sq. m)
 Available Color Groups: Solid Color, Symmetry, Marble, Fiesta, Marble Fiesta, SafeTcork & SafeTcork Fiesta.

**Performance Compound Tiles are available in solid color only.*

Technical Data

LEED v2009 IEQ Credit 4.1: Qualifies
 ASTM F1344 - Rubber Floor Tile: Class I, Type A & B, Grade 1
 ASTM E648 (NFPA 253) - Critical Radiant Flux: Class I, > 0.45 W/cm²
 ASTM E662 (NFPA 258) - Smoke Density: Passes < 450

ASTM F970 - Static Load Limit: Passes, 250 PSI
 ASTM F970 - Max Weight: 1100 PSI
 ASTM F925 - Chemical Resistance: Passes
 ASTM D2047 - Slip Resistance: > 0.6
 ASTM F1514 - Heat Color Stability: ΔE < 8 Avg.
 ASTM D3389 - Abrasion Resistance: < 1 g loss (1000 cycles)
 ASTM F2199 - Dimensional Stability: < 0.15% (MD & AMD)
 ASTM G21 - Resistance to Fungi: Excellent
 ASTM E492/E989 - Impact Sound: IIC 51
 ASTM E90 / E413 - Airborne Sound: STC 63
 ASTM E2179 - Effectiveness of Floor: ΔIIC 9
 Acclimation Time: 48 Hours
 Storage & Acclimation Temperature: 65 ° - 85 ° F

Approved Adhesive* (Visit our website for complete Adhesive recommendations)

SP-500 Aerosol Adhesive
 AP-520 Acrylic Pressure Sensitive Adhesive
 AW-510 Acrylic Wet-Set Adhesive
 MS-700 Modified Silane Adhesive
 EW-710 Epoxy Wet-Set Adhesive

Installation* (Visit our website for complete Installation instructions)

All materials are to be delivered to the installation location within 48 hours of installation in its original packaging with labels intact. Store products in a dry area protected from the weather with temperatures maintained between 65° F (19°C) and 85° F (30°C). DO NOT stack pallets. Remove all plastic wrapping and strapping from the pallets and un-box all material in the installation area at least 48 hours prior to installation.

Maintenance* (Visit our website for complete Maintenance instructions)

Sweep, dust mop or vacuum the floor to remove any dirt, dust or debris.

Availability, Cost & Samples

Roppe Flooring products are sold through distribution. To locate the nearest distributor, visit www.roppe.com. or send an email to solutions@roppe.com

Technical Document Support

Additional product resources and technical documents are available online at www.roppe.com. For additional technical support, send an e-mail to solutions@roppe.com

Warranty

Roppe Provides a 5 year Limited Warranty on all rubber tile. For additional information, see associated Warranty documents.

***For complete adhesive, installation & maintenance instructions, visit www.roppe.com**