



EDUCATE YOURSELF  
ON BETTER FLOORING  
OPTIONS



**ROPPE**  
EDUCATION





## Today's educational opportunities and challenges:

- 50 million K-12 students and 6 million adults occupy close to 100,000 public school buildings on an estimated 2 million acres of land every day!
- 24% of existing buildings are rated as "fair" or "poor" condition in the 2017 Infrastructure Report Card provided by ASCE.\*
- State and Local Government Challenge: Operations & maintenance of existing facilities while accommodating almost constant improvements in technology. Health, safety and accessibility standards add additional challenges for facilities maintenance planners who are also faced with an increasing population in each decade.



\* Source: Infrastructure Report Card provided by ASCE



# WHEN IT COMES TO FLOORING FOR EDUCATION, WE'VE LEARNED A LOT IN 60 YEARS.

Creating an environment that inspires learning, allows students to focus and contributes to the health and safety of everyone on campus is key to every education project.

Whether it's a classroom, lab, learning center, library, hallway or athletic facility, choosing the best flooring for the application can make all the difference in helping your customers achieve their educational goals.







# DOES YOUR FLOORING PASS THESE CRITICAL TESTS?

## **Comfort**

With packed halls and classrooms, flooring can contribute to noise reduction and reduce fatigue on feet and joints.

## **Noise Reduction**

Quiet environments mean less classroom disruptions and distractions, making it easier to hear and focus on teachers' lessons.

## **Healthy Air**

Products free from Red List chemicals, as well as requiring fewer chemicals for maintenance, mean improved indoor air quality, less illness and reduced absences.

## **Slip/Fall Prevention**

Hectic hallways and stairs are prime places for injury, and the best flooring puts safety and stability underfoot.

## **Aesthetic Appeal**

Choosing the right colors can create inspiring environments, while unique patterns can help hide dirt or contribute to reduced maintenance costs.

## **Life-Cycle Costs**

Using flooring that is made to last can provide decades of durability and performance. Low maintenance costs also provide greater value over longer product life cycles.







RUBBER TILE  
AND TREAD



ENVIRE®  
RUBBER SHEET AND TILE

ROPPE  
HAS THE  
ANSWERS



LVT  
TIMBERS, PARALLELS AND  
HEALTH & LEARNING VINYL



CONTOURS  
PROFIED WALL BASE SYSTEM®

# HERE'S YOUR QUICK-STUDY GUIDE



**ROPPE**



<b>Comfort</b>	Provides cushion underfoot, reduced vibration	Provides comfort underfoot
<b>Noise Reduction</b>	Quiet underfoot: ASTM E492/E989 – Impact Sound: IIC 50* ASTM E90 / E413 – Airborne Sound: STC 62* ASTM E2179 – Effectiveness of Floor: ΔIIC 11	Quiet underfoot: ASTM E492/E989 – Impact Sound: IIC 50** ASTM E90 / E413 – Airborne Sound: STC 53** ASTM E2179 – Effectiveness of Floor: ΔIIC 21**
<b>Safe and Sustainable</b>	Free of Red List chemicals, PVC, phthalates, and halogens; meets FloorScore®, NSF332 Gold and CHPS criteria	Formulated with non-phthalate plasticizers using 100% virgin materials; meets FloorScore® and CHPS criteria
<b>Slip/Fall Prevention</b>	ASTM D2047 – Slip Resistance: > 0.6	ASTM D2047 – Slip Resistance: > 0.6
<b>Aesthetic Appeal</b>	Lightly flecked pattern helps hide surface dirt, plus low daily maintenance; 32 colors available	23 Northern Timbers plank colors, 24 Northern Parallels colors, 15 Health & Learning Vinyl Tile colors; various tile sizes; low maintenance
<b>Life-Cycle Costs</b>	Reduced installation costs for sheet flooring; low-maintenance, greater durability; 5-year limited commercial warranty	Low-maintenance; greater durability due to no recycled content; 20-year commercial warranty

\*6" concrete, gypsum drop ceiling

\*\*3mm LVT installed with Excelsior CSU400 or FSU410



<b>Comfort</b>	Provides cushion underfoot, reduced vibration	–
<b>Noise Reduction</b>	Quiet underfoot: ASTM E492/E989 – Impact Sound: IIC 51 ASTM E90 / E413 – Airborne Sound: STC 60 ASTM E2179 – Effectiveness of Floor: ΔIIC 9	–
<b>Safe and Sustainable</b>	Free of Red List chemicals, PVC, phthalates, and halogens; meets FloorScore®, NSF332 Gold and CHPS criteria	TPR rubber compound contains bio-based phthalate free plasticizer; meets FloorScore®, NSF 332 Gold and CHPS criteria
<b>Slip/Fall Prevention</b>	ASTM D2047 – Slip Resistance: > 0.6	–
<b>Aesthetic Appeal</b>	Various profiles and 200+ color options; custom colors available to match school colors; patterns available to hide surface dirt, plus low maintenance	Available in 30 of our most popular neutral colors to coordinate with Envire®, rubber tile and tread, and LVT products
<b>Life-Cycle Costs</b>	Low-maintenance; greater durability; 5-year limited commercial warranty	Low-maintenance; better durability than traditional wood trim; 2-year manufacturer's warranty





# ENVIRE<sup>®</sup>

RUBBER SHEET AND TILE



Envire<sup>®</sup> Rubber Sheet S174 Smoke,  
S627 Mariner, S137 Cinnabar

Envire® Rubber Sheet and Tile was developed for use in high-traffic areas that require natural resilience, exceptional wear resistance and dimensional stability. Envire® combines the sleek beauty of sheet flooring with a palette created to bring design versatility into your space, creating an environment that is unique and timeless. Performs well where small-wheeled traffic may be present, too.

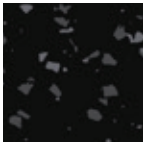
THE  
SYMPOSIUM  
DISTINCTION  
AWARDS

**Most Sustainable  
Product Award**

Envire® Rubber Sheet  
with FlashCove™



**Health Product  
Declaration®**  
is available at  
[roppe.com](http://roppe.com)



S100  
black



S123  
charcoal



S194  
burnt umber



S174  
smoke



S623  
nutmeg



S191  
camel



S184  
almond



S639  
beigewood



S122  
natural



S663  
aged fern



S648  
pear green



S646  
gecko



S649  
sweet basil



S662  
envy



S118  
peacock



S139  
deep navy



S627  
mariner



S618  
aubergine



S664  
blue jay



S656  
bluebell



S654  
lagoon



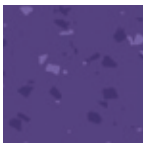
S638  
cadet



S655  
peaceful blue



S621  
merlin



S659  
grape



S186  
red



S137  
cinnabar



S617  
terracotta



S660  
citrus



S644  
sunbeam



S642  
jonquil



S161  
snow



Envire® Rubber Sheet S161 Snow,  
S194 Burnt Umber, S174 Smoke  
and S123 Charcoal



Envire® Rubber Sheet S161 Snow  
and S194 Burnt Umber

proudly made in the  
USA



LVT  
**NORTHERN  
TIMBERS**  
PREMIUM VINYL WOOD PLANK



Northern Timbers  
027 Tigereye Zebra





Northern Timbers 276 Vellum Sawcut Oak, 277 Roasted Sawcut Oak, Northern Parallels 292 Palermo



Northern Timbers  
042 Voodoo Beech



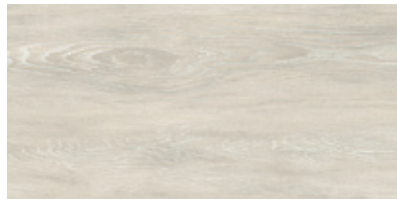
Northern Timbers  
040 Limed Gray Oak



# *northern timbers*

## PREMIUM VINYL WOOD PLANK

4"x36"x1/8" (3MM), 6"x48"x1/8" (3MM) / 28 MIL WEAR LAYER



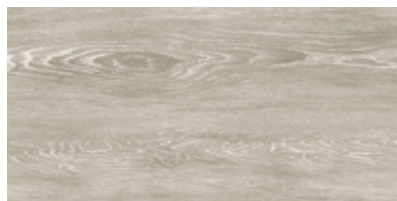
**L** 273 limed pale oak



**L** 024 golden oak



021 sandy pine



**L** 271 limed silver oak



**L** 026 gingered beech



035 bronzed oak



276 vellum sawcut oak



**L** 027 tigereye zebra



**L** 040 limed gray oak

**L** LOOSE-LAY OPTION AVAILABLE  
6"x 48"x 3/16" (5mm)  
28 mil wear layer

*Northern Timbers Loose-Lay  
offers a 20-year residential  
and 7-year commercial  
warranty (no rolling loads).*



**L** 029 toasted teak



032 copper hickory



272 limed beige oak



037 ash walnut





041 cocoa pine



280 zebra mist



281 whitewashed oak



275 pewter cherry



045 steely ash



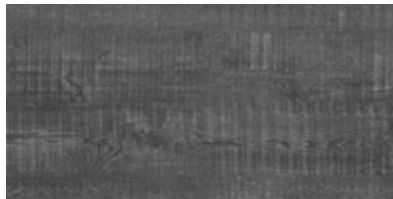
274 limed umber oak



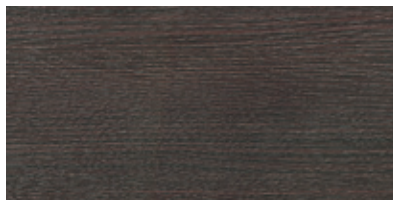
278 mineral cherry



277 roasted sawcut oak



279 granite sawcut oak



042 voodoo beech

Coordinating Roppe tile,  
tread and wall base colors:



122  
natural



174  
smoke



127  
harvest yellow



191  
camel



130  
buckskin



140  
fawn



623  
nutmeg



182  
toffee



178  
pewter



150  
dark gray



194  
burnt umber



123  
charcoal



147  
light brown





20  
YEAR  
Commercial  
WARRANTY  
ROPPE

LVT  
NORTHERN  
PARALLELS  
PREMIUM VINYL PLANK & TILE

proudly made in the



Northern Timbers  
280 Zebra Mist,  
Northern Parallels  
286 Alps





Northern Timbers  
271 Lined Silver Oak,  
Northern Parallels  
295 Sydney

Northern Parallels 282 Olympic,  
Northern Parallels 344 Kalahari



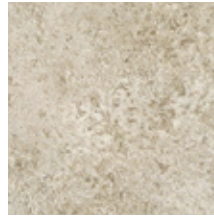
# *northern parallels*

PREMIUM VINYL  
PLANK & TILE

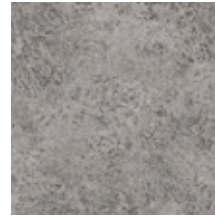
Northern Parallels is a new series of LVT visual options that are inspired by nature and correlate to our Northern Timbers designs and colors. A variety of 24 new planks and tiles vary in size from our standard offering to provide unique design opportunities, featuring a palette that complements our 70 colors of wall base, rubber tile and tread.

## STONE COLLECTION

18" x 18" x 1/8" (3mm) / 28 MIL WEAR LAYER



288 pyrenees



286 alps



287 dolomites

Coordinating Roppe tile, tread and wall base colors for  
Northern Parallels Stone Collection



122  
natural



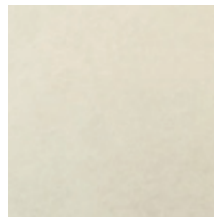
174  
smoke



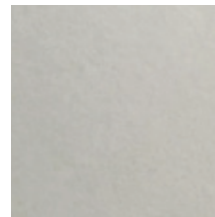
191  
camel

## DESERT COLLECTION

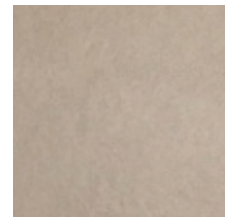
18" x 18" x 1/8" (3mm) / 28 MIL WEAR LAYER



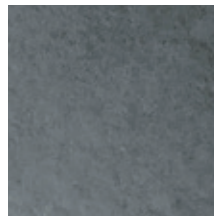
344 kalahari



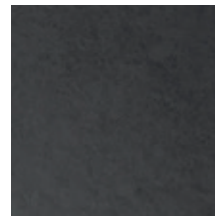
343 tanami



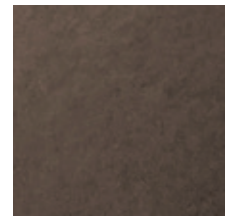
345 sonoran



341 mojave



340 gobi



342 arabian

Coordinating Roppe tile, tread and wall base colors for Northern Parallels Desert Collection



122  
natural



174  
smoke



191  
camel



123  
charcoal



100  
black



194  
burnt umber

PREMIUM WOOD VINYL PLANK CHEVRON  
9-1/4 "x 59-1/4 "x 1/8 " (3mm) / 28 MIL WEAR LAYER



Specify L for  
Left Plank  
(Angle Shown  
for Full Left  
Plank)



Specify R for  
Right Plank  
(Angle Shown  
for Full Right  
Plank)



L297 scandinavia



L298 nantucket

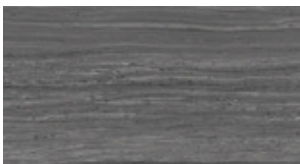


L299 santa fe

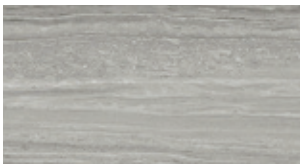
TRAVERTINE COLLECTION  
12 "x 24 "x 1/8 " (3mm) / 28 MIL WEAR LAYER



292 palermo



289 andria



290 catania



291 milan

MINI WOOD COLLECTION  
12 "x 24 "x 1/8 " (3mm) / 28 MIL WEAR LAYER



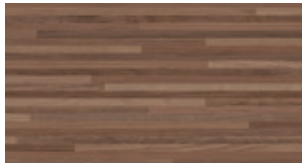
282 olympic



283 hunan



284 amazon



285 humboldt

COASTAL COLLECTION  
12 "x 24 "x 1/8 " (3mm) / 28 MIL WEAR LAYER



294 south beach



295 sydney

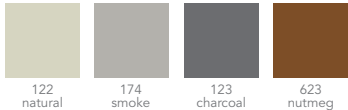


293 barcelona



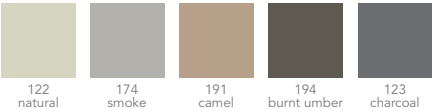
296 vancouver

Coordinating Roppe tile, tread and wall base colors for  
Northern Parallels Mini Wood Collection



122 natural 174 smoke 123 charcoal 623 nutmeg

Coordinating Roppe tile, tread and wall base colors for  
Northern Parallels Travertine and Coastal



122 natural 174 smoke 191 camel 194 burnt umber 123 charcoal





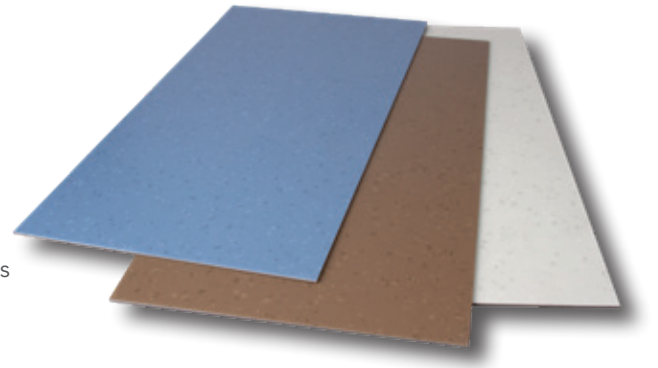
LVT  
HEALTH &  
LEARNING  
VINYL TILE

proudly made in the  
 **USA**

Health & Learning Vinyl  
Tile HL04 Warm Tea,  
HL11 Blue Sky,  
HL14 Calm Clay

Health & Learning Vinyl Tiles are a great pair with our rubber tile and tread offerings.

Health & Learning Vinyl Tile and Envire® Rubber Sheet and Tile or our Raised Design Rubber Tiles and Treads in our new Symmetry palette are a great pair for installation where the benefits of rubber and vinyl flooring need to work together. It's easy to use both flooring types with 13 coordinating colors across the two product lines. Available in 12"x24"x1/8" (3mm) glue-down tiles with a straight edge.



HL01  
river stone



HL02  
hot cocoa



HL03  
cool breeze



HL04  
warm tea



HL05  
wheat fields



HL06  
blonde bee



HL07  
brown earth



HL08  
simple salt



HL09  
grey day



HL10  
sweet dill



HL11  
blue sky



HL12  
midnight



HL13  
merlot



HL14  
calm clay



HL15  
snowfall



Hammered Rubber Tile  
F401 Camelo and F404 Niebla with a  
custom chip in 139 Deep Navy base



Fiesta® Rubber Tile F404 Niebla



Dimensions Rubber  
Tile, Stripe profile,  
colors 187 Blue,  
127 Harvest Yellow  
and 146 Turquoise



# RUBBER TILE

proudly made in the



Smooth Marbleized Tile  
M131 Bisque,  
M617 Terracotta  
and M129 Dolphin



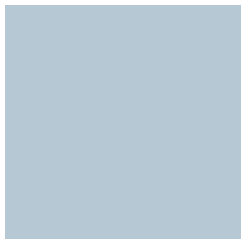
# RUBBER TILE

proudly made in the



Fiesta® Rubber Tile  
F404 Niebla and a  
custom accent tile





smooth  
976 (3/16") & 978 (1/8") – 12" x 12"  
(304.8mm x 304.8mm)  
969 (3/16") & 970 (1/8") – 19-11/16" x  
19-11/16" (50cm x 50cm)



991 slate  
19-11/16" x 19-11/16" x 1/8"  
(50cm x 50cm)

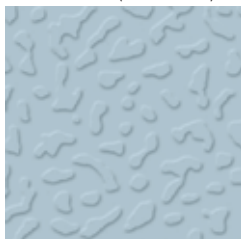


992 low profile  
19-11/16" x 19-11/16" x 1/8"  
(50cm x 50cm)

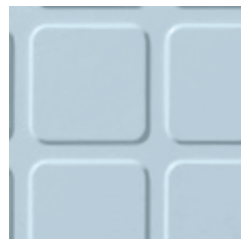
*raised design*  
RUBBER TILE

*smooth finish*  
RUBBER TILE

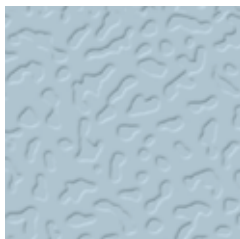
*dimensions*  
RUBBER TILE



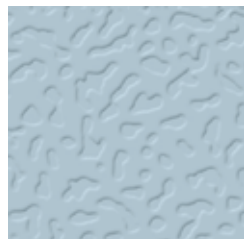
993 textured  
19-11/16" x 19-11/16" x 1/8"  
(50cm x 50cm)



994 square  
19-11/16" x 19-11/16" x 1/8"  
(50cm x 50cm)



995 hammered  
19-11/16" x 19-11/16" x 1/8"  
(50cm x 50cm)



R24 hammered design  
(.080" gauge, 24" x 24" tile for  
Fiesta®/Marbleized Fiesta®  
and Symmetry  
color palettes only)



996 vantage  
19-11/16" x 19-11/16" x 1/8"  
(50cm x 50cm)



lug back vantage  
19-11/16" x 19-11/16" x 13/64"  
(50cm x 50cm)  
(available only with 996;  
available in solid color only)



**Health Product  
Declaration®**  
is available at  
[roppe.com](http://roppe.com)



**Environmental  
Product Declaration®**  
is available at  
[roppe.com](http://roppe.com)



953 warning tile design  
24" x 24" x 1/8"



982 crackle design  
19-11/16" x 19-11/16" x 1/8"  
(50cm x 50cm)



983 random design  
19-11/16" x 19-11/16" x 1/8"  
(50cm x 50cm)



984 stripe design  
19-11/16" x 19-11/16" x 1/8"  
(50cm x 50cm)

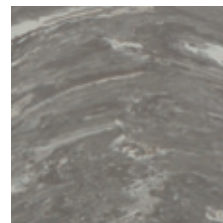


## 70 SOLID COLORS

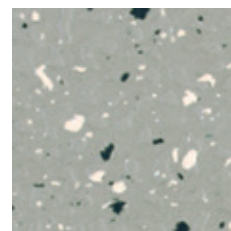
(For all rubber tile and tread profiles excluding Smooth and Hammered R24.)

							
100 black	177 steel blue	150 dark gray	193 black brown	123 charcoal	114 lunar dust	129 dolphin	178 pewter
							
194 burnt umber	148 steel gray	175 slate	174 smoke	197 iceberg	110 brown		
							
147 light brown	182 toffee	623 nutmeg	624 chameleon	140 fawn	191 camel	125 fig	171 sandstone
							
130 buckskin	198 ivory	632 flax	184 almond	170 white	131 bisque	127 harvest yellow	631 sahara
							
639 beigewood	640 creekbed	122 natural	195 light gray	663 aged fern	648 pear green	647 spring dill	646 gecko
							
160 forest green	649 sweet basil	169 hunter green	662 envy	118 peacock	187 blue	139 deep navy	627 mariner
							
618 aubergine	665 horizon	664 blue jay	656 bluebell	654 lagoon	638 cadet	637 night mist	655 peaceful blue
							
657 sorbet	658 berry ice	621 merlin	659 grape	186 red	137 cinnabar	188 brick	617 terracotta
							
660 citrus	661 marmalade	643 mimosa	644 sunbeam	642 jonquil	645 blonde	641 moonrise	161 snow

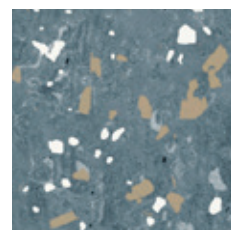
ADDITIONAL PALETTES  
FOR MARBLEIZED,  
FIESTA®, MARBLEIZED  
FIESTA® AND SYMMETRY  
COLORS (SEE ROPPE.COM  
OR SAMPLE BOOKS)



marbleized – 70 colors



fiesta® – 8 colors



marbleized fiesta® – 8 colors



symmetry – 32 colors



# RUBBER TILE

proudly made in the



Smooth Marbleized Tile  
M100 Black



# RUBBER STAIR TREADS

Vantage One-Piece  
Tread/Riser Combo  
198 Ivory

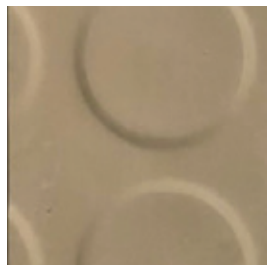
proudly made in the





# rubber treads

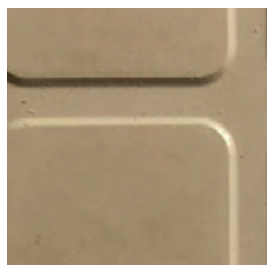
RAISED DESIGN



92 low-profile  
36"-72" in 6" increments



93 textured  
36"-108" in 6" increments



94 square  
36"-108" in 6" increments



95 hammered w/riser  
36"-72" in 6" increments  
99 hammered w/o riser  
36"-108" in 6" increments



96 vantage w/riser  
36"-108" in 6" increments  
97 vantage extended depth  
36"-72" in 6" increments  
98 vantage w/o riser  
36"-108" in 6" increments

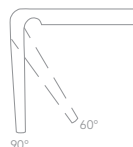
## tapered nose

Many Roppe treads have a tapered nose for a clean fit. They help reduce tripping hazards while providing a better finished look.



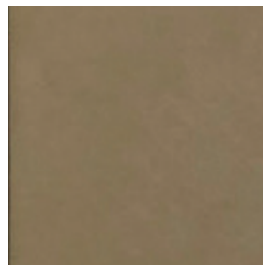
## relief cut

Many of our treads include a molded relief cut that aids in the installation of our treads on today's angled stairs.

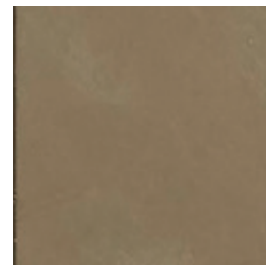


**Health Product Declaration®**  
is available at  
[roppe.com](http://roppe.com)

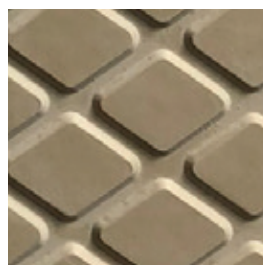
# specialty rubber treads



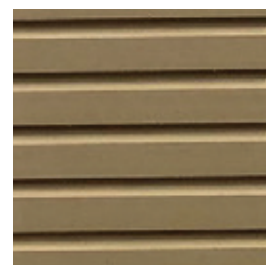
60/61 hd (heavy duty) smooth  
36"-72" in 6" increments



70/71 ld (light duty) smooth  
36"-72" in 6" increments



30/31 diamond  
30 available in 36"-108"  
in 6" increments  
31 available in 36"-72"  
in 6" increments



80/81 rib  
36"-72" in 6" increments



40/41 hd (heavy duty) abrasive  
36"-72" in 6" increments



50/51 ld (light duty) abrasive  
36"-72" in 6" increments



# CONTOURS





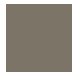

















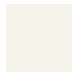







PROFILED WALL BASE SYSTEM®

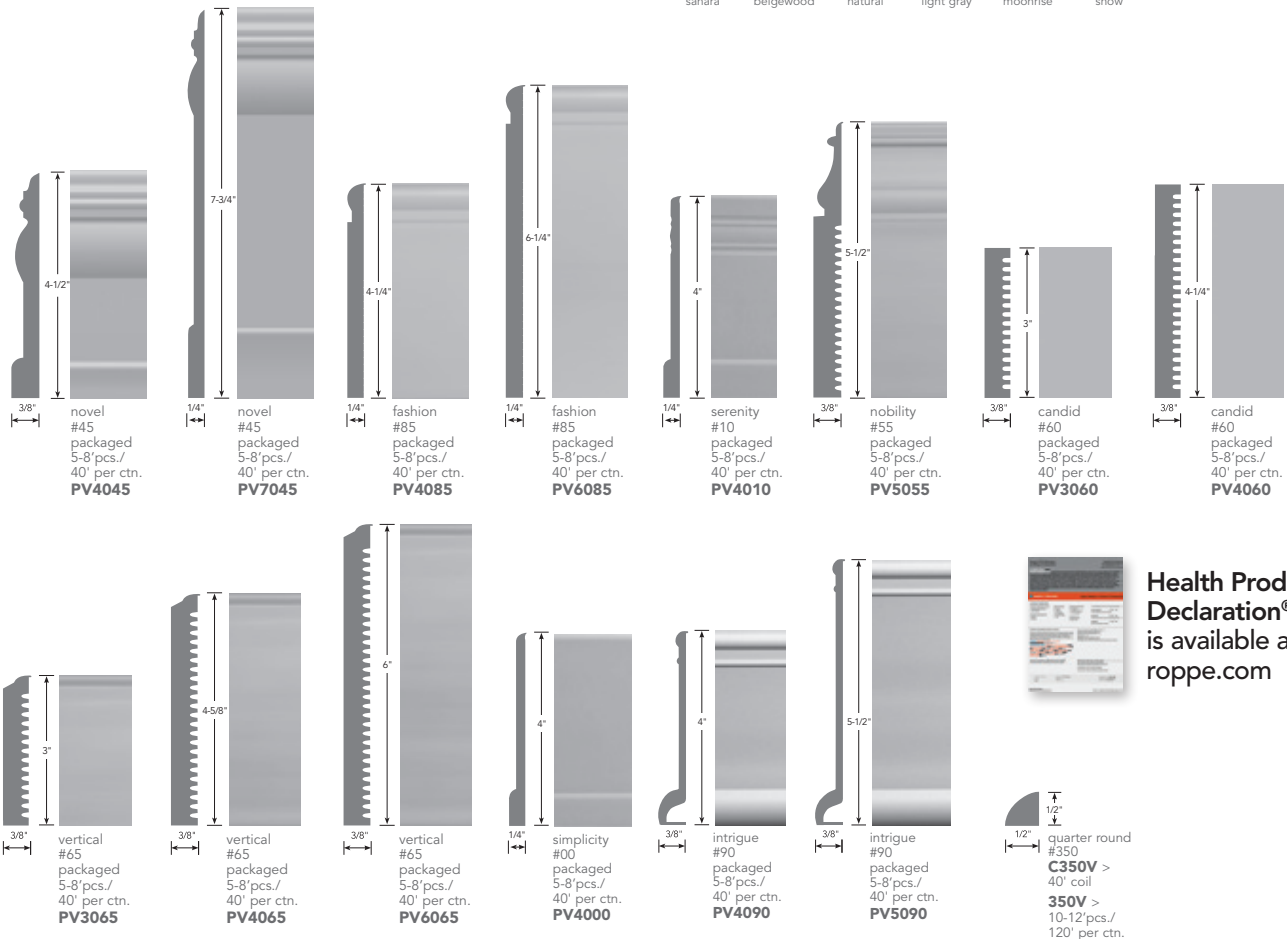
Contours Profile  
PV7045 Novel in  
170 White

proudly made in the



Architectural details, such as wood trim, are becoming prevalent in commercial design. However, the details such as nailing, filling and finishing are labor intensive and costly. Contours Profiled Wall Base System® offers the look of wood base with the enhanced properties resilient base touts such as resistance to chipping, absorbing moisture or splintering. Contours can also mask irregular surfaces and wrap around gentle curves. Contours installs easily and saves money and time during installation and over the life of the project.

							
100 black	150 dark gray	193 black brown	123 charcoal	114 lunar dust	129 dolphin	178 pewter	194 burnt umber
							
175 slate	174 smoke	110 brown	147 light brown	182 toffee	623 nutmeg	624 chameleon	140 fawn
							
191 camel	125 fig	130 buckskin	198 ivory	632 flax	184 almond	170 white	131 bisque
							
631 sahara	639 beigewood	122 natural	195 light gray	641 moonrise	161 snow		



Health Product Declaration® is available at [roppe.com](http://roppe.com)





# A STUDY IN ECONOMICS

When it comes to life-cycle management and cost analysis, Roppe brings hard facts to the statement that “cheaper isn’t better.”

Over time, the durability and low maintenance costs of Roppe rubber flooring and LVT offset initial investment costs while providing a higher level of performance and customer satisfaction over their lifetime.



# life cycle cost analysis

Industry studies have shown that flooring materials with a higher initial cost do not necessarily translate to a higher cost in the long run. In fact, findings indicate flooring materials with a higher initial cost will perform more cost effectively over many years. For example, while rubber flooring may cost more initially, the cost of maintaining it is lower. And because it's extremely durable, it lasts a very long time. So, when examining long-term costs, it is important to consider the total cost of ownership. With the right information, you can help customers control costs – not just on the initial project, but also in the long run.

	 VCT (Finish)	 LVT (No Finish)	 RUBBER (No Finish)
INITIAL INSTALLED COST PER SF <i>(Material/labor only, average)</i>	\$1.50	\$4.50-\$5.00	\$9.50-\$10.00 <i>(Excludes heat weld material/labor)</i>
EXAMPLE: INSTALLATION COSTS FOR 70,000 SF	\$105,000	\$350,000	\$735,000
COST OF YEARLY BIWEEKLY MAINTENANCE	\$174,465	\$32,863	\$32,863
YEARLY SAVINGS FOR MAINTENANCE		\$141,602 savings	\$141,602 savings
YEARS TO RECOVER THE COST OF THE MAINTENANCE		2.5 years	5.2 years

Source: Spencer Luallen, Technical Maintenance Specialist, Roppe Holding Company

**"Finish" maintenance** based on 2 full strip and wax per year; 2x scrub and recoat; scrub 650 sf per hour; recoat with 2 coats finish; 2 people 250 sf per hr; plus full cleaning every 2 weeks less the 4 weeks above. Cost of chemicals includes stripper 150 sf per G; first coat finish 2000 sf per G; coats 2-5 finish 2500 sf per G (5 coats figured). Cost of labor includes \*2 people 250 sf per hour; 7 hrs per day (1750 sf per day). Cost of pads, mops, etc., includes 8 stripping pads, 6 scrubbing pads and 6 burnishing pads.

**"No Finish" maintenance** based on full cleaning every 2 weeks. Cost of chemicals includes all purpose cleaner 5000 sf per G; 300 sf per G of diluted solution, proper dilution ratio 4 oz neutral cleaner per 1G water. Cost of labor includes 1 person 1250 sf per hr, 7 hrs per day (8750 sf per day). Cost of pads, mops, etc., includes 0 pads if using an autoscrubber w/brush attachment or 2-3 scrubbing pads, 2-3 polish pads.



# CHEM AND BIO 101: THE FORMULAS FOR SUSTAINABILITY

You can rely on Roppe for environmentally responsible products that give you peace of mind for sustainability, safety and health.

We redesigned all rubber products manufactured by Roppe to be Red List Chemical FREE! The Red List contains the worst-in-class materials prevalent in the building industry.

Plus, we've redesigned all of the vinyl products we produce using bio-based, phthalate free plasticizer to reduce Greenhouse Gas impacts by 7-10% versus petroleum-based plasticizer products.

We also eliminated the use of recycled content so we know exactly what our product formulations contain – no surprises!





I will not use Red List Chemicals or phthalate plasticizers.  
I will not use Red List Chemicals or phthalate plasticizers.  
I will not use Red List Chemicals or phthalate plasticizers.  
I will not use Red List Chemicals or phthalate plasticizers.  
I will not use Red List Chemicals or phthalate plasticizers.  
I will not use Red List Chemicals or phthalate plasticizers.

**Red List  
Chemical Free**



**BIO-BASED**  
**PHthalate  
FREE**





# HISTORY LESSON: YEARS OF PROVEN PERFORMANCE AND SATISFIED CUSTOMERS.

All of the benefits of Roppe products are great stories in and of themselves, but the real tests are out in the field where our products have performed year after year, decade after decade.

Westerly High School is just one example of how Roppe products address the challenges that can be faced in educational environments.



# WESTERLY HIGH SCHOOL

**The Challenge:** Westerly High School is not unlike many schools designed and built in their era. The halls are covered in VCT which was very budget-friendly at the point of purchase, but required many layers of finish and continual buffing to achieve the desired look and fell prone to slippery entrance areas. Extensive matting systems became the norm to prevent slip/fall incidences.

Given the opportunity to replace the flooring in the STEM program department, the new flooring option needed to be easy to maintain without the use of finishes or abrasive cleaners while maintaining the original beauty.



Smooth Marbleized Rubber Tile,  
M198 Ivory, M627 Mariner,  
M137 Cinnabar and M626 Tangerine

“Haven’t had a single slip/fall incident (since the rubber flooring installation).”

– Brad Lamprey, custodian at Westerly High School

“No issues with the installation at all. In fact, we didn’t even have a punch list after the installation was complete. It was easy to install and start to finish went really well.”

– Frank Venturini Jr., Regal Flooring

**The Solution:** Roppe Smooth Marbleized Rubber Tiles in creative, unique design patterns.

Overall, Roppe flooring addressed the challenges, particularly at the entrances where heavy moisture situations due to weather in Rhode Island posed slip-and-fall problems with the old, heavily waxed VCT flooring.

The new flooring also allowed for functional designs to serve the educational process. **The area at left was designed to test gravity and friction roll rates for the physics department using carts designed by the mechanics in engineering.** The different line colors and placement are the gauges to determine performance.





proudly made in the



Slate Design Rubber Tile  
in Marbled colors  
M100 Black, M123 Charcoal  
and M616 Platinum





Smooth Marbleized Tile  
M198 Ivory, M627 Mariner,  
M137 Cinnabar and  
M626 Tangerine



# TRENDING COLORS ARE NOW IN SESSION

At Roppe, we've teamed up with Sherwin-Williams for color trends for 2019, and the following **Roppe palettes – selected specifically for education** – are ready to deliver the style you need.

Have a specific school color you need to use? Custom colors are always available for the perfect match to school and team palettes (minimums apply).





## EDUCATION – NATURE COLLECTION

Holistic and inspired by nature, these colors provide a soft backdrop for any class setting without being a distraction from the rest of the learning environment.

**SHERWIN-WILLIAMS.**



SW 0056  
Classic Sand



SW 0068  
Copen Blue



SW 2832  
Colonial Revival Gray



SW 7691  
Biltmore Buff



SW 6345  
Sumptuous Peach



SW 0051  
Classic Ivory



SW 0066  
Cascade Green



SW 6541  
Daydream

Color samples shown approximate actual paint colors as closely as possible. The Cover The Earth logo and the Sherwin-Williams logo are trademarks owned or licensed by The Sherwin-Williams Company. ©2019 The Sherwin-Williams Company.

**ROPPE.**  
Proven • Flooring • Experiences •



S656  
bluebell



S627  
mariner



S655  
peaceful blue



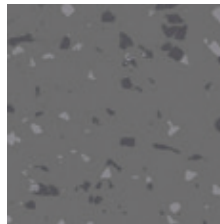
S638  
cadet



S663  
aged fern



S649  
sweet basil



S123  
charcoal



S194  
burnt umber



S174  
smoke



S161  
snow

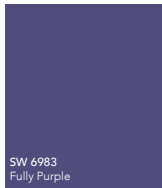
Color collections, forecasts, descriptions and coordinating Roppe selections are in conjunction with The Sherwin-Williams Company.

Emily Kantz  
Interior Designer | Color Marketing & Design  
NCIDQ Certificate No. 28037 | LEED AP ID+C,  
EDAC | ASID | IIDA, Industry Partner

## EDUCATION – BRIGHTS COLLECTION

Fun and energetic, these colorful hues not only provide a pop of color in the space, it also aids in wayfinding for younger children.

**SHERWIN-WILLIAMS®**



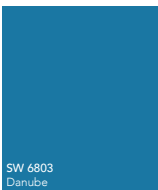
SW 6983  
Fully Purple



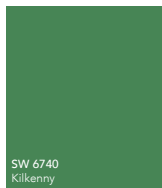
SW 6704  
Hep Green



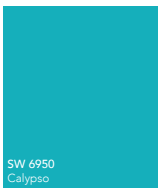
SW 6890  
Osage Orange



SW 6803  
Danube



SW 6740  
Kilkenny



SW 6950  
Calypso



SW 6886  
Invigorate



SW 6841  
Dynamo

**ROPPE.**  
Proven • Flooring • Experiences •



S186  
red



S660  
citrus



S642  
jonquil



S662  
envy



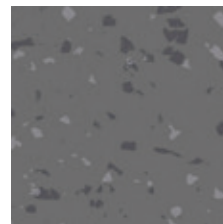
S664  
blue jay



S659  
grape



S100  
black



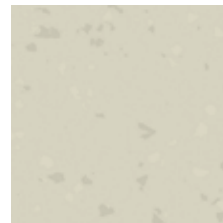
S123  
charcoal



S174  
smoke



S161  
snow



S122  
natural

Color samples shown approximate actual paint colors as closely as possible. The Cover The Earth logo and the Sherwin-Williams logo are trademarks owned or licensed by The Sherwin-Williams Company. ©2019 The Sherwin-Williams Company.

EDUCATION –  
**CLASS COLORS**  
**COLLECTION**

This collection adds a dose of school spirit into the school's corridors or classrooms.



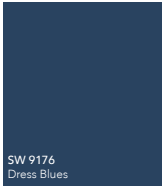
S654  
lagoon



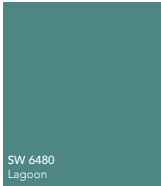
S139  
deep navy



S137  
cinnabar



SW 9176  
Dress Blues



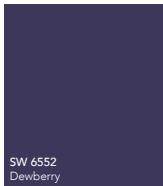
SW 6480  
Lagoon



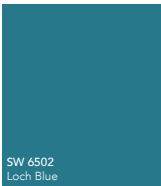
SW 6300  
Burgundy



SW 7669  
Summit Gray



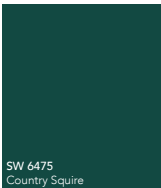
SW 6552  
Dewberry



SW 6502  
Loch Blue



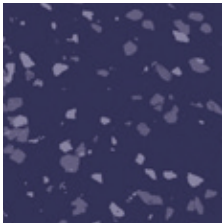
SW 7038  
Tony Taupe



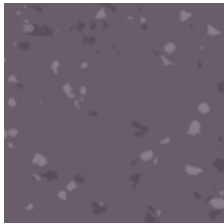
SW 6475  
Country Squire



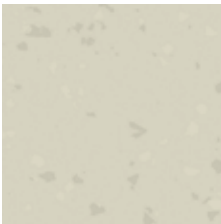
S118  
peacock



S618  
aubergine



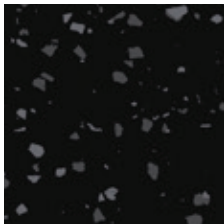
S621  
merlin



S122  
natural



S639  
beigewood



S100  
black



S174  
smoke



S161  
snow

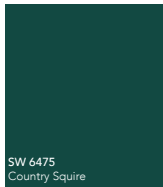
Color samples shown approximate actual paint colors as closely as possible. The Cover The Earth logo and the Sherwin-Williams logo are trademarks owned or licensed by The Sherwin-Williams Company. ©2019 The Sherwin-Williams Company.



## EDUCATION – UNIVERSITY COLLECTION

This sophisticated palette is globally influenced. Complex and worn, these flooring options work with a variety of colors and can greatly change the look of any space.

**SHERWIN-WILLIAMS®**



SW 6475  
Country Squire



SW 2817  
Rookwood Amber



SW 6860  
Eros Pink



SW 2849  
Westchester Gray



SW 9142  
Moscow Midnight



SW 7734  
Olive Grove



SW 9098  
Baked Cookie



SW 6628  
Robust Orange

Color samples shown approximate actual paint colors as closely as possible. The Cover The Earth logo and the Sherwin-Williams logo are trademarks owned or licensed by The Sherwin-Williams Company. ©2019 The Sherwin-Williams Company.

**ROPPE.**  
Proven • Flooring • Experiences •

### WARM PALETTE



035 bronzed oak



272 limed beige oak



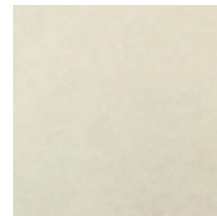
037 ash walnut



276 vellum sawcut oak



288 pyrenees

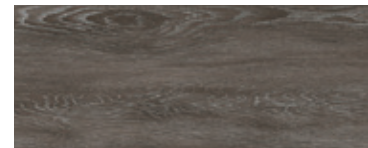


344 kalahari

### COOL PALETTE



295 sydney



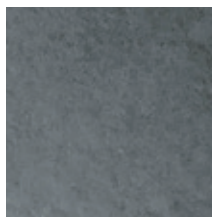
274 limed umber oak



296 vancouver



275 pewter cherry



341 mojave



286 alps



Northern Timbers  
271 Limed Silver Oak,  
Northern Parallels  
295 Sydney

proudly made in the  


# EDUCATION – NEUTRAL COLLECTION – RUBBER

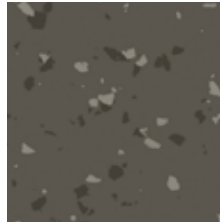
This balanced collection provides a great backdrop to school colors.

**SHERWIN-WILLIAMS**



**ROPPE**  
Proven • Flooring • Experiences

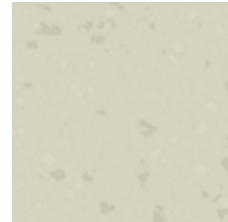
WARM PALETTE



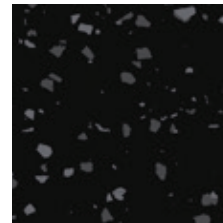
S194  
burnt umber



S639  
beigewood

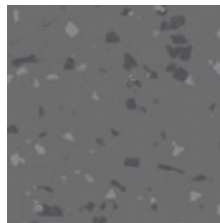


S122  
natural



S100  
black

COOL PALETTE



S123  
charcoal



S174  
smoke



S161  
snow

Color samples shown approximate actual paint colors as closely as possible. The Cover The Earth logo and the Sherwin-Williams logo are trademarks owned or licensed by The Sherwin-Williams Company. ©2019 The Sherwin-Williams Company.



EDUCATION –  
**NEUTRAL COLLECTION –**  
**LVT – STONE & WOOD**

This collection provides a great variety of both warm and cool tones.

**SHERWIN-WILLIAMS.**



Color samples shown approximate actual paint colors as closely as possible. The Cover The Earth logo and the Sherwin-Williams logo are trademarks owned or licensed by The Sherwin-Williams Company. ©2019 The Sherwin-Williams Company.

**ROPPE.**  
 Proven • Flooring • Experiences •





Fiesta® Rubber Tile  
F404, Niebla, Logo 187 Blue,  
170 White, 174 Smoke  
and 165 Colonial Blue





## CUSTOM WATERJET-CUT LOGOS AND CUSTOM COLORS

Build a school's brand with custom waterjet-cut logos and graphics as part of the flooring. Ideal for entryways, hallways and athletic facilities, logos can also feature custom colors to match your school's palette. Minimum quantities apply.





# GEOGRAPHY: ROPPE FLOORING IS GOING PLACES

With so many great products for education, how does Roppe fit in with your future plans or projects?

Roppe goes well in many types of facilities, including **day care centers, K-12 facilities, higher education, and technical/career centers.**

Let the illustration spark your imagination for where Roppe fits in with the school scene, plus think about how other complementary Roppe products can tie it all together.



## Classrooms & Labs

Envire® Rubber Sheet and Tile, Rubber Tile, Northern Timbers, Northern Parallels, Health & Learning Vinyl Tile, Contours Profiled Wall Base, Rubber Wall Base

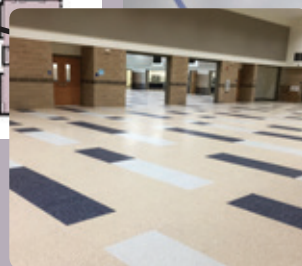


## Dining Areas

Envire® Rubber Sheet and Tile, Rubber Tile, Northern Timbers, Northern Parallels, Health & Learning Vinyl Tile, Contours Profiled Wall Base, Rubber Wall Base

## Hallways/ Stairways

Rubber Stair Treads, Warning Tile, Rubber Tile, Rubber Wall Base



## Gyms/Athletic Facilities/ Multipurpose

Envire® Rubber Sheet and Tile, Rubber Tile, Recoil Fitness Flooring, Tuflex, Northern Timbers, Rubber Wall Base



Smooth Rubber Treads w/  
Riser, Fiesta® F416 Avahar,  
Stringer in 187 Blue

## IMPLEMENT A COMPLETE SYSTEM

Roppe products are designed to work together with coordinated colors, materials, product thicknesses and more – from tile to stair treads to wall base and accessories.



Hammered Profile Tiles  
in 187 Blue with accent tiles  
in Hammered Profile  
F416 Avahar and F407 Tierra;  
Pinnacle Rubber Base  
in 187 Blue



# RUBBER TILE

AND TREAD



Hammered Profile Rubber  
Tiles, F416 Avahar and  
187 Blue accent tiles,  
Pinnacle Rubber Base  
in 187 Blue



# IT'S TIME TO HIT THE BOOKS.

Roppe sampling kits, folders, chain sets and sample swatches are always readily available to give you the notes and product samples you need for your next assignment.

Make sure your library and salespeople are equipped with the latest books or call Roppe customer service for more information or sampling tools, including those listed here.



## **Envire® (sheet & tile)**

- 41-671 Envire® brochure
- 117-671 FlashCove brochure
- 189-670 Envire®/FlashCove folder
- 264-670 Envire® 32-piece sets (2/cn)
- 266-670 Envire® container/card sets

## **LVT (NT, NP, H&L)**

- 108-671 Northern Timbers brochure
- 110-671 Northern Parallels brochure
- 191-670 NT/NP folder
- 109-671 H&L Vinyl Tile brochure
- 197-670 H&L Vinyl Tile folder

## **Rubber Tile & Tread**

- 73-671 Rubber Tile brochure
- 78-671 Rubber Tread brochure
- 107-671 70-color pocket guide
- 91-670 Marbleized Tile box
- 8-670 Rubber Tread chain
- 9-670 Rubber Tile chain

## **Contours**

- 40-671 Contours brochure
- 111-671 Contours color pocket guide
- 196-670 Contours folder
- 271-670 Contours Rapid Ship stocking board
- 257-670 Contours strap set









# WE'RE READY TO REVIEW, ANY TIME.

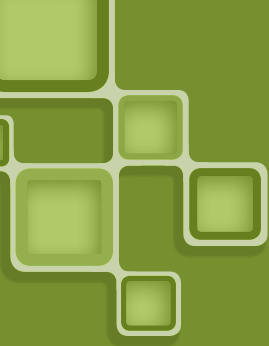
Roppe is proud of our role in shaping the educational flooring industry. We look forward to working with you on your next spec or answering any questions you may have about how Roppe flooring can address your project needs.

From **rubber tile and tread** ... to **Envire® rubber sheet and tile** ... to **Northern Timbers, Northern Parallels and Health & Learning Vinyl** ... to **Contours profiled wall base**, Roppe is ready to deliver proven flooring experiences to meet your educational expectations.



1.800.537.9527 | [www.roppe.com](http://www.roppe.com)





1.800.537.9527 | [www.roppe.com](http://www.roppe.com)



Your link to Roppe products and LEED® documentation.  
For more information, please visit: [roppe.com](http://roppe.com).

