

GET BETTER  
COVERAGE FROM  
YOUR HEALTHCARE  
SYSTEM



Bill T. Teague  
Donor Center

*Dedicated October 26, 2005*

ROPPE.  
HEALTHCARE







**Today's healthcare opportunities and challenges:**

- 6,210 hospitals in the United States, with a total of more than 930,000 beds and combined expenses of over \$1 trillion.\*
- 77% of respondents would be doing some type of renovation, retrofit or modernization of buildings in the next 12 to 24 months.\*\*
- Maintenance and renovation budgets are in competition for capital that could also be used for new equipment and technology, plus renovations are expected to have greater longevity.\*\*\*

\* Source: AHA Hospital Statistics, 2019 edition  
\*\* Healthcare Facilities Today Survey  
\*\*\* ASHE Health Facilities Management Survey



WITH 60 YEARS OF FLOORING SOLUTIONS, YOUR HEALTHCARE OPTIONS HAVE NEVER BEEN BETTER.

Building an environment that promotes health, wellness and healing is key to every healthcare project.

From entryways to patient rooms and waiting areas to surgical suites, making the best flooring selections is important to creating an atmosphere in which healthcare professionals can deliver top-quality care and patients can take confident steps on the road to recovery.





# DOES YOUR FLOORING CONTRIBUTE TO A CLEAN BILL OF HEALTH?

## Comfort

From doctors making rounds to patient recovery and rehabilitation, flooring can contribute to reducing fatigue on feet and joints while also contributing to emotional healing.

## Patient/Caregiver Safety

In busy hallways, rehab areas and other places where patients take important steps toward recovery, the best flooring puts safety and stability underfoot.

## Noise Reduction

Quiet hallways and rooms mean less disruptions and distractions, making it easier for caregivers to concentrate on quality care, and for patients to get needed rest as they recuperate.

## Aesthetic Appeal

Choosing the right colors can create environments that encourage positive stimuli for healing, while unique patterns can help hide dirt or contribute to reduced maintenance costs.

## Healthy Air

Products free from Red List chemicals, as well as requiring fewer chemicals for maintenance, mean improved indoor air quality and fewer external health factors.

## Life-Cycle Costs

Using flooring that is made to last can provide decades of durability and performance. Low maintenance costs also provide greater value over longer product life cycles.



RUBBER TILE  
AND TREAD

ROPPE IS  
AT THE  
HEART OF  
IT ALL

ENVIRE®  
RUBBER SHEET AND TILE

Bill T. Teague  
Donor Center

*Dedicated October 26, 2005*

LVT  
TIMBERS, PARALLELS AND  
HEALTH & LEARNING VINYL

CONTOURS  
PROFILED WALL BASE SYSTEM®



# A QUICK CHECK OF THE CHARTS



Comfort	Provides cushion underfoot, reduced vibration	Provides comfort underfoot
Noise Reduction	Quiet underfoot: ASTM E492/E989 – Impact Sound: IIC 50* ASTM E90 / E413 – Airborne Sound: STC 62* ASTM E2179 – Effectiveness of Floor: ΔIIC 11	Quiet underfoot: ASTM E492/E989 – Impact Sound: IIC 50** ASTM E90 / E413 – Airborne Sound: STC 53** ASTM E2179 – Effectiveness of Floor: ΔIIC 21**
Safe and Sustainable	Free of Red List chemicals, PVC, phthalates, and halogens; meets FloorScore®, NSF332 Gold and CHPS criteria	Formulated with non-phthalate plasticizers using 100% virgin materials; meets FloorScore® and CHPS criteria
Slip/Fall Prevention	ASTM D2047 – Slip Resistance: > 0.6	ASTM D2047 – Slip Resistance: > 0.6
Aesthetic Appeal	Lightly flecked pattern helps hide surface dirt, plus low daily maintenance; 32 colors available	23 Northern Timbers plank colors, 24 Northern Parallels colors, 15 Health & Learning Vinyl Tile colors; various tile sizes; low maintenance
Life-Cycle Costs	Reduced installation costs for sheet flooring; low-maintenance, greater durability; 5-year limited commercial warranty	Low-maintenance; greater durability due to no recycled content; 20-year commercial warranty

Comfort	Provides cushion underfoot, reduced vibration	–
Noise Reduction	Quiet underfoot: ASTM E492/E989 – Impact Sound: IIC 51 ASTM E90 / E413 – Airborne Sound: STC 60 ASTM E2179 – Effectiveness of Floor: ΔIIC 9	–
Safe and Sustainable	Free of Red List chemicals, PVC, phthalates, and halogens; meets FloorScore®, NSF332 Gold and CHPS criteria	TPR rubber compound contains bio-based phthalate free plasticizer; meets FloorScore®, NSF 332 Gold and CHPS criteria
Slip/Fall Prevention	ASTM D2047 – Slip Resistance: > 0.6	–
Aesthetic Appeal	Various profiles and 200+ color options; custom colors available to match school colors; patterns available to hide surface dirt, plus low maintenance	Available in 30 of our most popular neutral colors to coordinate with Envire®, rubber tile and tread, and LVT products
Life-Cycle Costs	Low-maintenance; greater durability; 5-year limited commercial warranty	Low-maintenance; better durability than traditional wood trim; 2-year manufacturer's warranty

\*6" concrete, gypsum drop ceiling    \*\*3mm LVT installed with Excelsior CSU400 or FSU410





# ENVIRE®

## RUBBER SHEET AND TILE



Envire® Rubber Sheet S161 Snow, S627 Mariner

Envire® Rubber Sheet and Tile was developed for use in high-traffic areas that require natural resilience, exceptional wear resistance and dimensional stability. Envire® combines the sleek beauty of sheet flooring with a palette created to bring design versatility into your space, creating an environment that is unique and timeless. Performs well where small-wheeled traffic may be present, too.



Envire® Rubber Sheet  
S161 Snow, S194 Burnt Umber



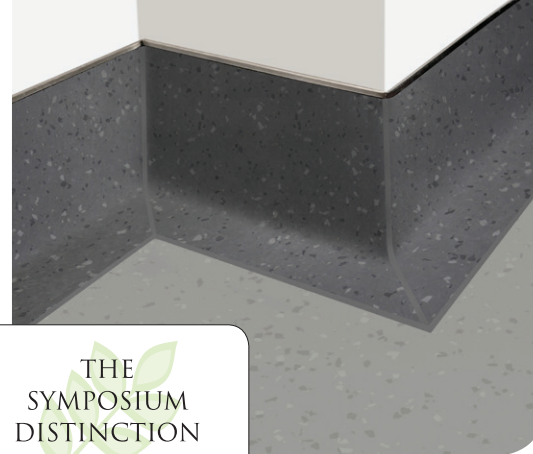
**Health Product Declaration®**  
is available at  
[roppe.com](http://roppe.com)

S100 black	S123 charcoal	S194 burnt umber	S174 smoke	S623 nutmeg	S191 camel	S184 almond	S639 beigewood
S122 natural	S663 aged fern	S648 pear green	S646 gecko	S649 sweet basil	S662 envy	S118 peacock	S139 deep navy
S627 mariner	S618 aubergine	S664 blue jay	S656 bluebell	S654 lagoon	S638 cadet	S655 peaceful blue	S621 merlin
S659 grape	S186 red	S137 cinnabar	S617 terracotta	S660 citrus	S644 sunbeam	S642 jonquil	S161 snow





When hygiene matters, FlashCove is the only based guaranteed to perform. FlashCove Prefabricated Bases arrive on site with a bonded aluminum reinforcing backer that strengthens the weakest part of the base. Where site-formed bases are prone to punctures during maintenance and use, thus compromising hygiene, FlashCove Bases are guaranteed to stay puncture-proof for life.



THE  
SYMPOSIUM  
DISTINCTION  
AWARDS

**Most Sustainable  
Product Award**

Envire® Rubber Sheet  
with FlashCove™

Envire® Rubber Sheet  
S174 Smoke, FlashCove™  
S123 Charcoal

**Stainless "Chiklet" Cap\***

\* FlashCove can also be  
used with Roppe Cove  
Cap Accessory profiles.

**Envire®  
Rubber Sheet**

**Bonded  
Puncture  
Proof  
Aluminum  
Reinforcement**

### **Fastest, tightest installation for unmatched fit and finish.**

The tighter radius of a FlashCove Prefabricated Base allows for no gaps at standard door frames and corners. Just cut and install – alleviate wasted time trying to fill the unhygienic gaps that may occur with site-formed bases.

### **Easiest maintenance for greatest hygiene.**

The tighter radius also allows cleaning equipment to get closer to the wall and clean more thoroughly without risk of damaging or puncturing the base.

### **The only puncture-proof base with a lifetime warranty.**

FlashCove Prefabricated Bases are guaranteed to be immune to the failures that plague site-formed bases – movement of equipment, maintenance machines and point loads, such as chairs.



### **IMMUNITY FROM PUNCTURES AND BREAKDOWNS**

With the introduction of FlashCove – partnered with our Envire® Rubber Sheet product and our Excelsior™ line of floor prep, installation and maintenance items – Roppe can now offer a complete system and a **confidence in each installation that is unmatched in the industry.**

proudly made in the



Envire® Rubber Sheet with  
FlashCove™ S174 Smoke





LVT  
**NORTHERN  
TIMBERS**  
PREMIUM VINYL WOOD PLANK



Northern Timbers  
027 Tigereye Zebra



Northern Timbers 276 Vellum Sawcut Oak, 277 Roasted  
Sawcut Oak, Northern Parallels 292 Palermo



Northern Timbers  
024 Golden Oak



Northern Timbers  
042 Voodoo Beech



# northern timbers

PREMIUM VINYL WOOD PLANK

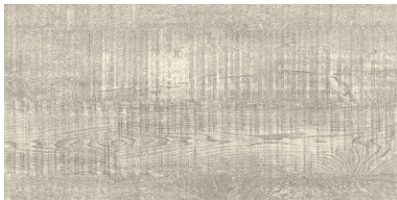
4"x36"x1/8" (3MM), 6"x48"x1/8" (3MM) / 28 MIL WEAR LAYER



L 273 limed pale oak



L 271 limed silver oak



276 vellum sawcut oak

L LOOSE-LAY OPTION AVAILABLE  
6"x 48"x 3/16" (5mm)  
28 mil wear layer

*Northern Timbers Loose-Lay  
offers a 20-year residential  
and 7-year commercial  
warranty (no rolling loads).*



L 024 golden oak



L 026 gingered beech



L 027 tigereye zebra



L 029 toasted teak



272 limed beige oak



021 sandy pine



035 bronzed oak



L 040 limed gray oak



032 copper hickory



037 ash walnut



041 cocoa pine



280 zebra mist



281 whitewashed oak



275 pewter cherry



045 steely ash



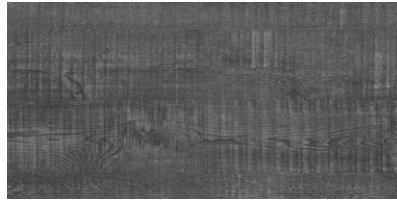
274 limed umber oak



278 mineral cherry



277 roasted sawcut oak



279 granite sawcut oak



L 042 voodoo beech

Coordinating Roppe tile,  
tread and wall base colors:



122  
natural



174  
smoke



127  
harvest yellow



191  
camel



130  
buckskin



140  
fawn



623  
nutmeg



182  
toffee



178  
pewter



150  
dark gray



194  
burnt umber



123  
charcoal



147  
light brown





# LVT NORTHERN PARALLELS

PREMIUM VINYL PLANK & TILE



Northern Timbers  
271 Limed Silver Oak,  
Northern Parallels  
295 Sydney



Northern Timbers  
280 Zebra Mist,  
Northern Parallels  
286 Alps

Northern Parallels 282 Olympic,  
Northern Parallels 344 Kalahari





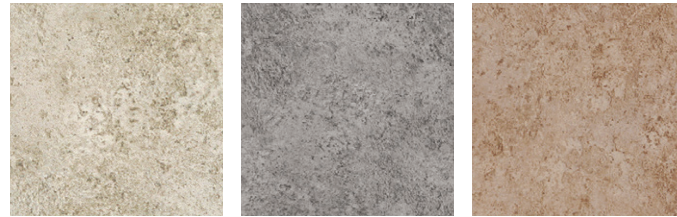
# *northern parallels*

PREMIUM VINYL  
PLANK & TILE

Northern Parallels is a new series of LVT visual options that are inspired by nature and correlate to our Northern Timbers designs and colors. A variety of 24 new planks and tiles vary in size from our standard offering to provide unique design opportunities, featuring a palette that complements our 70 colors of wall base, rubber tile and tread.

## STONE COLLECTION

18" x 18" x 1/8" (3mm) / 28 MIL WEAR LAYER

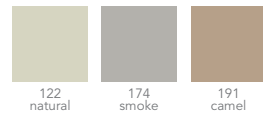


288 pyrenees

286 alps

287 dolomites

Coordinating Roppe tile, tread and wall base colors for Northern Parallels Stone Collection



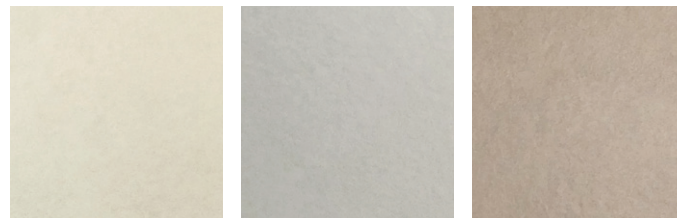
122 natural

174 smoke

191 camel

## DESERT COLLECTION

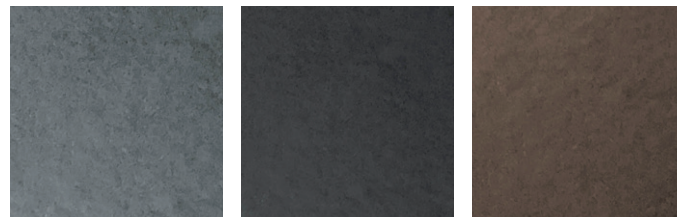
18" x 18" x 1/8" (3mm) / 28 MIL WEAR LAYER



344 kalahari

343 tanami

345 sonoran

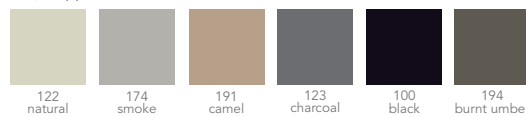


341 mojave

340 gobi

342 arabian

Coordinating Roppe tile, tread and wall base colors for Northern Parallels Desert Collection



122 natural

174 smoke

191 camel

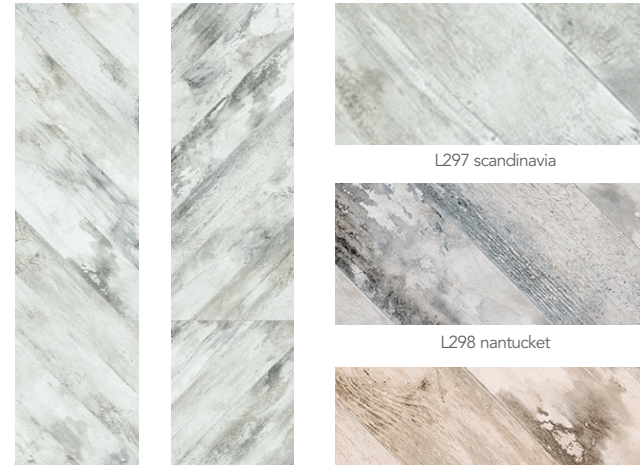
123 charcoal

100 black

194 burnt umber

## PREMIUM WOOD VINYL PLANK CHEVRON

9-1/4" x 59-1/4" x 1/8" (3mm) / 28 MIL WEAR LAYER



L297 scandinavia

L298 nantucket

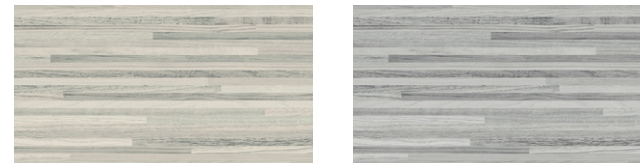
L299 santa fe

Specify L for Left Plank  
(Angle Shown for Full Left Plank)

Specify R for Right Plank  
(Angle Shown for Full Right Plank)

## MINI WOOD COLLECTION

12" x 24" x 1/8" (3mm) / 28 MIL WEAR LAYER



282 olympic

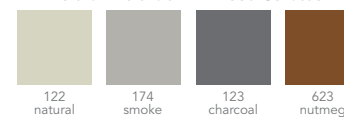
283 hunan



284 amazon

285 humboldt

Coordinating Roppe tile, tread and wall base colors for Northern Parallels Mini Wood Collection



122 natural

174 smoke

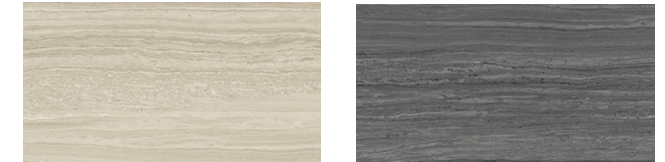
123 charcoal

623 nutmeg



## TRAVERTINE COLLECTION

12" x 24" x 1/8" (3mm) / 28 MIL WEAR LAYER



292 palermo

289 andria



290 catania

291 milan

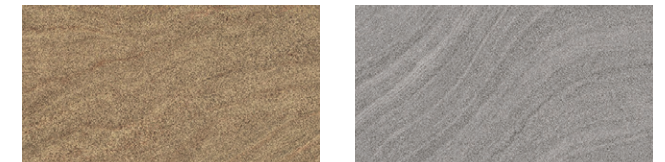
## COASTAL COLLECTION

12" x 24" x 1/8" (3mm) / 28 MIL WEAR LAYER



294 south beach

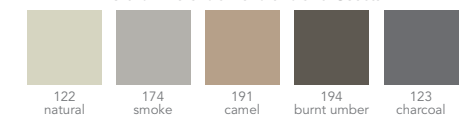
295 sydney



293 barcelona

296 vancouver

Coordinating Roppe tile, tread and wall base colors for Northern Parallels Travertine and Coastal



122 natural

174 smoke

191 camel

194 burnt umber

123 charcoal





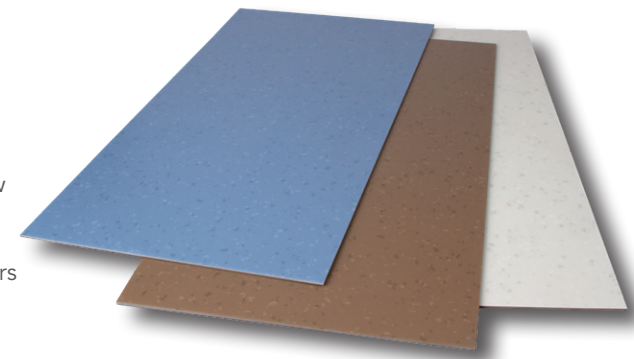
# LVT HEALTH & LEARNING VINYL TILE



Health & Learning Vinyl  
Tile HL04 Warm Tea,  
HL11 Blue Sky

Health & Learning Vinyl Tiles are a great pair with our rubber tile and tread offerings.

Health & Learning Vinyl Tile and Envire® Rubber Sheet and Tile or our Raised Design Rubber Tiles and Treads in our new Symmetry palette are a great pair for installation where the benefits of rubber and vinyl flooring need to work together. It's easy to use both flooring types with 13 coordinating colors across the two product lines. Available in 12"x24"x1/8" (3mm) glue-down tiles with a straight edge.



HL01  
river stone



HL02  
hot cocoa



HL03  
cool breeze



HL04  
warm tea



HL05  
wheat fields



HL06  
blonde bee



HL07  
brown earth



HL08  
simple salt



HL09  
grey day



HL10  
sweet dill



HL11  
blue sky



HL12  
midnight



HL13  
merlot



HL14  
calm clay



HL15  
snowfall





Hammered Rubber Tile  
F401 Camelo and F404 Niebla with a  
custom chip in 139 Deep Navy base



SafeTcork® Rubber Tile Z606 Tropical Blue  
and Custom Green



Smooth Marbleized  
Rubber Tile  
M170 White,  
M174 Smoke and  
M656 Bluebell;  
Pinnacle Rubber Base  
656 Bluebell



# RUBBER TILE

proudly made in the  
**USA**

SafeTcork® Rubber Tile  
Z122 Natural, Z606 Tropical  
Blue, Z1446 Turquoise and  
Z621 Merlin



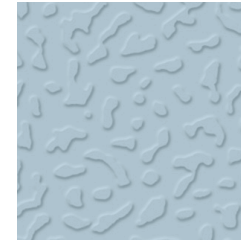
# RUBBER TILE



Slate Design Fiesta®  
Rubber Tile custom  
color with 140 Fawn  
accent tile



smooth  
976 (3/16") & 978 (1/8") – 12" x 12"  
(304.8mm x 304.8mm)  
969 (3/16") & 970 (1/8") – 19-11/16" x  
19-11/16" (50cm x 50cm)



993 textured  
19-11/16" x 19-11/16" x 1/8"  
(50cm x 50cm)



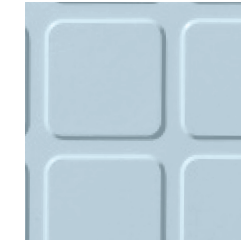
R24 hammered design  
(.080" gauge, 24" x 24" tile for  
Fiesta®/Marbleized Fiesta®  
and Symmetry  
color palettes only)



953 warning tile design  
24" x 24" x 1/8"



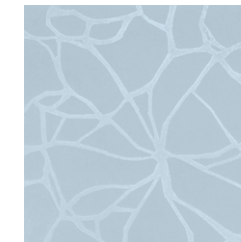
991 slate  
19-11/16" x 19-11/16" x 1/8"  
(50cm x 50cm)



994 square  
19-11/16" x 19-11/16" x 1/8"  
(50cm x 50cm)



996 vantage  
19-11/16" x 19-11/16" x 1/8"  
(50cm x 50cm)



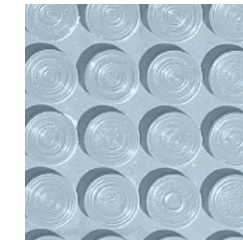
982 crackle design  
19-11/16" x 19-11/16" x 1/8"  
(50cm x 50cm)



992 low profile  
19-11/16" x 19-11/16" x 1/8"  
(50cm x 50cm)



995 hammered  
19-11/16" x 19-11/16" x 1/8"  
(50cm x 50cm)



lug back vantage  
19-11/16" x 19-11/16" x 13/64"  
(50cm x 50cm)  
(available only with 996;  
available in solid color only)



983 random design  
19-11/16" x 19-11/16" x 1/8"  
(50cm x 50cm)



984 stripe design  
19-11/16" x 19-11/16" x 1/8"  
(50cm x 50cm)

*raised design*  
RUBBER TILE

*smooth finish*  
RUBBER TILE

*dimensions*  
RUBBER TILE



**Health Product  
Declaration®**  
is available at  
[roppe.com](http://roppe.com)



**Environmental  
Product Declaration®**  
is available at  
[roppe.com](http://roppe.com)

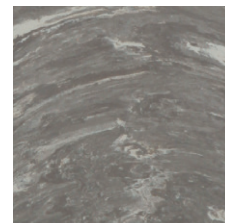


## 70 SOLID COLORS

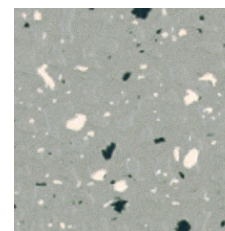
(For all rubber tile and tread profiles excluding Smooth and Hammered R24.)

							
100 black	177 steel blue	150 dark gray	193 black brown	123 charcoal	114 lunar dust	129 dolphin	178 pewter
							
194 burnt umber	148 steel gray	175 slate	174 smoke	197 iceberg	110 brown		
							
147 light brown	182 toffee	623 nutmeg	624 chameleon	140 fawn	191 camel	125 fig	171 sandstone
							
130 buckskin	198 ivory	632 flax	184 almond	170 white	131 bisque	127 harvest yellow	631 sahara
							
639 beigewood	640 creekbed	122 natural	195 light gray	663 aged fern	648 pear green	647 spring dill	646 gecko
							
160 forest green	649 sweet basil	169 hunter green	662 envy	118 peacock	187 blue	139 deep navy	627 mariner
							
618 aubergine	665 horizon	664 blue jay	656 bluebell	654 lagoon	638 cadet	637 night mist	655 peaceful blue
							
657 sorbet	658 berry ice	621 merlin	659 grape	186 red	137 cinnabar	188 brick	617 terracotta
							
660 citrus	661 marmalade	643 mimosa	644 sunbeam	642 jonquil	645 blonde	641 moonrise	161 snow

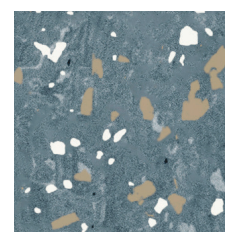
ADDITIONAL PALETTES  
FOR MARBLEIZED,  
FIESTA®, MARBLEIZED  
FIESTA® AND SYMMETRY  
COLORS (SEE ROPPE.COM  
OR SAMPLE BOOKS)



marbleized – 70 colors



fiesta® – 8 colors



marbleized fiesta® – 8 colors



symmetry – 32 colors



# RUBBER TILE

proudly made in the  


Slate Design Rubber Tile  
in Marbleized colors  
M100 Black, M123  
Charcoal and M616  
Platinum



# RUBBER TILE



Slate Design Fiesta®  
Rubber Tile custom  
color with custom  
solid color accents



# RUBBER STAIR TREADS

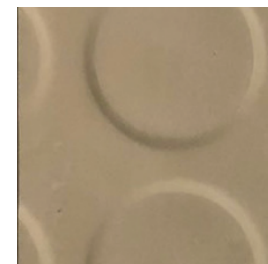
Vantage One-Piece  
Tread/Riser Combo  
198 Ivory

proudly made in the

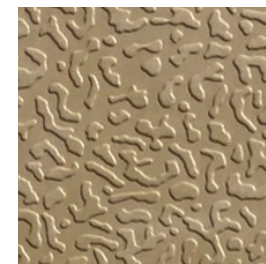


## rubber treads

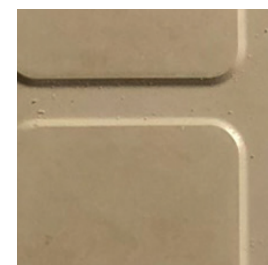
RAISED DESIGN



92 low-profile  
36"-72" in 6" increments



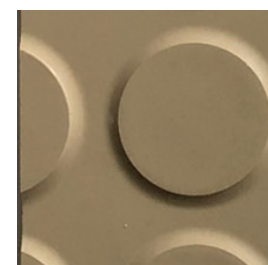
93 textured  
36"-108" in 6" increments



94 square  
36"-108" in 6" increments



95 hammered w/riser  
36"-108" in 6" increments  
99 hammered w/o riser  
36"-108" in 6" increments



96 vantage w/riser  
36"-108" in 6" increments  
97 vantage extended depth  
36"-72" in 6" increments  
98 vantage w/o riser  
36"-108" in 6" increments

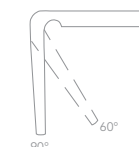
### tapered nose

Many Roppe treads have a tapered nose for a clean fit. They help reduce tripping hazards while providing a better finished look.



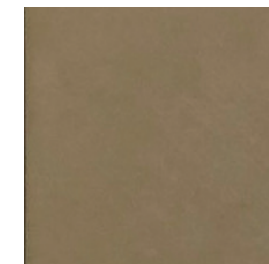
### relief cut

Many of our treads include a molded relief cut that aids in the installation of our treads on today's angled stairs.



Health Product  
Declaration®  
is available at  
[roppe.com](http://roppe.com)

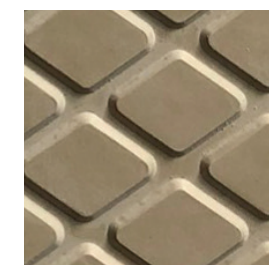
## specialty rubber treads



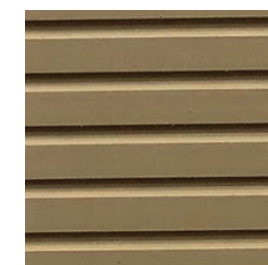
60/61 hd (heavy duty) smooth  
36"-72" in 6" increments



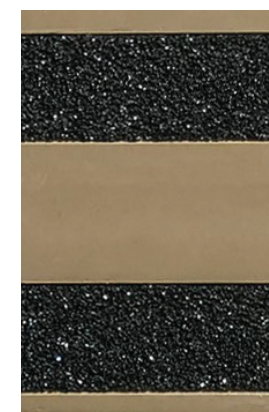
70/71 ld (light duty) smooth  
36"-72" in 6" increments



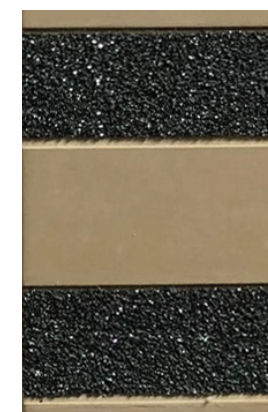
30/31 diamond  
30 available in 36"-108"  
in 6" increments  
31 available in 36"-72"  
in 6" increments



80/81 rib  
36"-72" in 6" increments



40/41 hd (heavy duty) abrasive  
36"-72" in 6" increments



50/51 ld (light duty) abrasive  
36"-72" in 6" increments



# CONTOURS

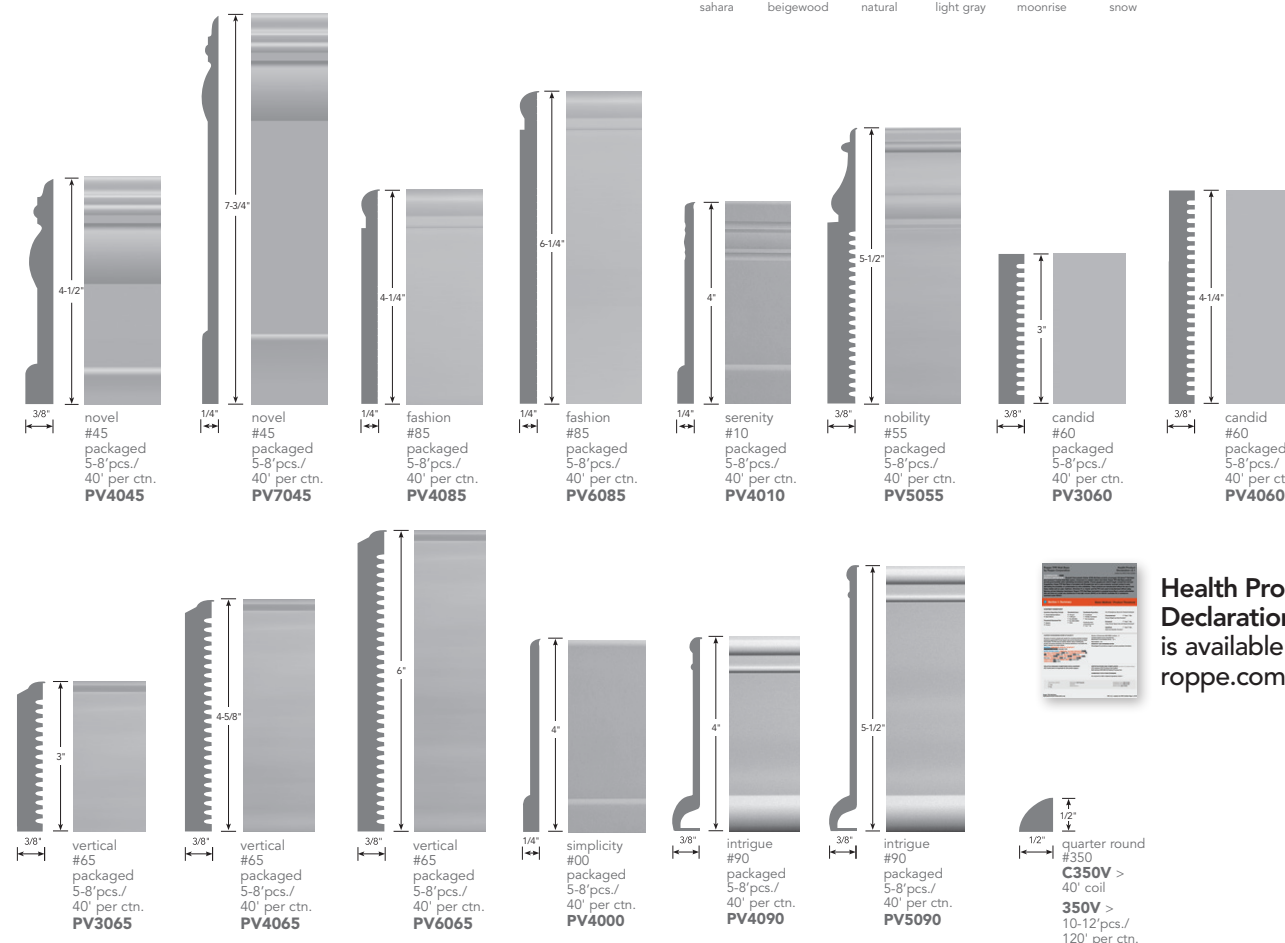
## PROFILED WALL BASE SYSTEM®

Contours Profile  
PV7045 Novel in  
170 White



Architectural details, such as wood trim, are becoming prevalent in commercial design. However, the details such as nailing, filling and finishing are labor intensive and costly. Contours Profiled Wall Base System® offers the look of wood base with the enhanced properties resilient base touts such as resistance to chipping, absorbing moisture or splintering. Contours can also mask irregular surfaces and wrap around gentle curves. Contours installs easily and saves money and time during installation and over the life of the project.

100 black	150 dark gray	193 black brown	123 charcoal	114 lunar dust	129 dolphin	178 pewter	194 burnt umber
175 slate	174 smoke	110 brown	147 light brown	182 toffee	623 nutmeg	624 chameleon	140 fawn
191 camel	125 fig	130 buckskin	198 ivory	632 flax	184 almond	170 white	131 bisque
631 sahara	639 beigewood	122 natural	195 light gray	641 moonrise	161 snow		



Health Product  
Declaration®  
is available at  
[roppe.com](http://roppe.com)



# A HEALTHY BOTTOM LINE FOR THE LONG HAUL

When it comes to life-cycle management and cost analysis, Roppe brings hard facts to the statement that “cheaper isn’t better.”

Over time, the durability and low maintenance costs of Roppe rubber flooring and LVT offset initial investment costs while providing a higher level of performance and customer satisfaction over their lifetime.



## life cycle cost analysis

Industry studies have shown that flooring materials with a higher initial cost do not necessarily translate to a higher cost in the long run. In fact, findings indicate flooring materials with a higher initial cost will perform more cost effectively over many years. For example, while rubber flooring may cost more initially, the cost of maintaining it is lower. And because it’s extremely durable, it lasts a very long time. So, when examining long-term costs, it is important to consider the total cost of ownership. With the right information, you can help customers control costs – not just on the initial project, but also in the long run.

	 VCT (Finish)	 LVT (No Finish)	 RUBBER (No Finish)
INITIAL INSTALLED COST PER SF <small>(Material/labor only, average)</small>	\$1.50	\$4.50-\$5.00	\$9.50-\$10.00 <small>(Excludes heat weld material/labor)</small>
EXAMPLE: INSTALLATION COSTS FOR 70,000 SF	\$105,000	\$350,000	\$735,000
COST OF YEARLY BIWEEKLY MAINTENANCE	\$174,465	\$32,863	\$32,863
YEARLY SAVINGS FOR MAINTENANCE		\$141,602 savings	\$141,602 savings
YEARS TO RECOVER THE COST OF THE MAINTENANCE		2.5 years	5.2 years

Source: Spencer Luallen, Technical Maintenance Specialist, Roppe Holding Company

**“Finish” maintenance** based on 2 full strip and wax per year; 2x scrub and recoat; scrub 650 sf per hour; recoat with 2 coats finish; 2 people 250 sf per hr; plus full cleaning every 2 weeks less the 4 weeks above. Cost of chemicals includes stripper 150 sf per G; first coat finish 2000 sf per G; coats 2-5 finish 2500 sf per G (5 coats figured). Cost of labor includes \*2 people 250 sf per hour; 7 hrs per day (1750 sf per day). Cost of pads, mops, etc., includes 8 stripping pads, 6 scrubbing pads and 6 burnishing pads.

**“No Finish” maintenance** based on full cleaning every 2 weeks. Cost of chemicals includes all purpose cleaner 5000 sf per G; 300 sf per G of diluted solution, proper dilution ratio 4 oz neutral cleaner per 1G water. Cost of labor includes 1 person 1250 sf per hr, 7 hrs per day (8750 sf per day). Cost of pads, mops, etc., includes 0 pads if using an autoscrobber w/brush attachment or 2-3 scrubbing pads, 2-3 polish pads.



# THE LAB WORK IS IN: WE'RE POSITIVE FOR SUSTAINABILITY

You can rely on Roppe for environmentally responsible products that give you peace of mind for sustainability, safety and health.

We redesigned all rubber products manufactured by Roppe to be Red List Chemical FREE! The Red List contains the worst-in-class materials prevalent in the building industry.

Plus, we've redesigned all of the vinyl products we produce using bio-based, phthalate free plasticizer to reduce Greenhouse Gas impacts by 7-10% versus petroleum-based plasticizer products.

We also eliminated the use of recycled content so we know exactly what our product formulations contain – no surprises!





# YEARS OF PROVEN PERFORMANCE: HERE'S A STRONG SECOND OPINION.

All of the benefits of Roppe products are great stories in and of themselves, but the real tests are out in the field where our products have performed year after year, decade after decade.

Gulf Coast Regional Blood Center is just one example of how Roppe products address the challenges that can be faced in healthcare environments.

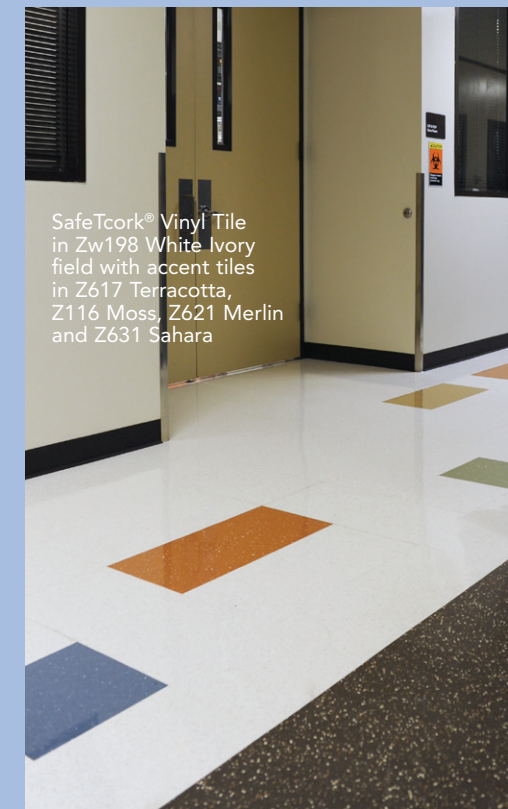


## GULF COAST REGIONAL BLOOD CENTER

**The Challenge:** Gulf Coast Regional Blood Center, an independent, non-profit blood center, began operations in January 1975 with a mission to partner with the community to help save and sustain lives by providing a safe supply of blood, blood components and related services.

When the opportunity to renovate arose, the project manager knew they needed to consider resilient products for high traffic areas that required low maintenance, had a slip-resistant option and that were appealing/modern in appearance. Another issue that had presented itself through the daily use of the existing VCT flooring, were the indentations from employees and guests of the donor center wearing high heel shoes.

“Our organization is very conscientious in regards to spending. The majority of the flooring replaced was original to the two buildings built in 1980 & 1991. I am confident the new products will remain for a similar time frame and will look as great as they do today.”  
– Sheri Burmaster, Project Manager with The Blood Center



SafeTcork® Vinyl Tile in Zw198 White Ivory field with accent tiles in Z617 Terracotta, Z116 Moss, Z621 Merlin and Z631 Sahara

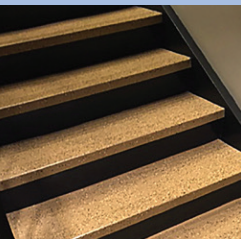
**The Solution:** The solution was to specify Roppe SafeTcork Vinyl Tile for the corridors, mainly because of the 2000psi that it offers to prevent the same unsightly marks from high heel shoes. The colorful palette also works well within the space.

Stairwells are covered in Fiesta Rubber Treads and Recoil fitness flooring was selected for the ramps to aid in slip resistance, as well.

With regards to maintenance, the maintenance team expressed that both the rubber and vinyl products have performed exactly as they had anticipated. They are low maintenance and have maintained their new finished appearance.

The ability to obtain the many different flooring products through one distributor facilitated a smoother installation than working with multiple vendors and trying to coordinate the effort.

Fiesta® Rubber Treads  
F413 Amarillo



Northern Timbers  
040 Limed Gray Oak





## HOW GULF COAST REGIONAL BLOOD CENTER IMPLEMENTED A COMPLETE SYSTEM

Roppe products are designed to work together with coordinated colors, materials, product thicknesses and more – from tile to stair treads to wall base and accessories. Gulf Coast Regional Blood Center used the benefits of Roppe rubber and vinyl flooring throughout their facilities while still being able to match product thicknesses and coordinate color palettes.

Fiesta® Rubber Treads  
F413 Amarillo



Northern Timbers  
040 Limed Gray Oak

## RUBBER & VINYL TILE AND TREAD



proudly made in the  
**USA**

SafeTcork® Vinyl Tile  
in Zw198 White Ivory  
field with accent tiles  
in Z617 Terracotta,  
Z116 Moss, Z621 Merlin  
and Z631 Sahara;  
Pinnacle Rubber Base  
100 Black



Recoil 198 Ivory



# TRENDING COLORS, NOW GOING VIRAL

At Roppe, we've teamed up with Sherwin-Williams for color trends for 2019-2020, and the following **Roppe palettes** – **selected specifically for healthcare** – are ready to deliver the style you need.

Have a specific color you need to use for your healthcare brand? Custom colors are always available for the perfect match your facilities' palettes (minimums apply).



## HEALTHCARE – COLORFUL DISTRACTION

Inspired by the active lifestyle, these vibrant colors are full of energy and spirit. These colors can aid in wayfinding, can act as a focal point for therapy or just brighten up a space.

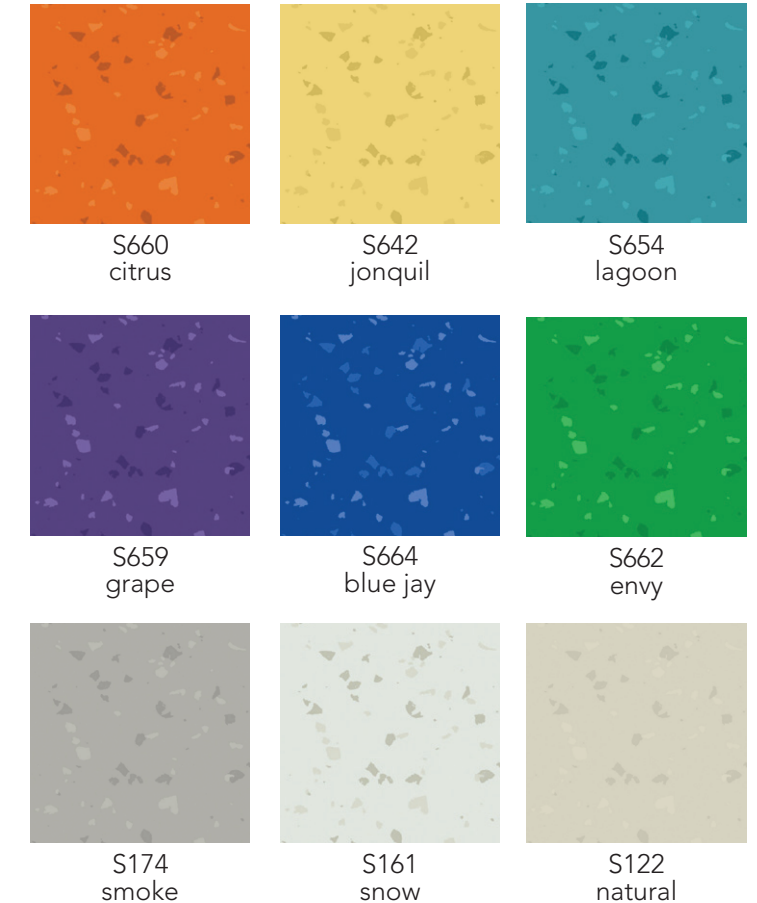
### SHERWIN-WILLIAMS



Color samples shown approximate actual paint colors as closely as possible. The Cover The Earth logo and the Sherwin-Williams logo are trademarks owned or licensed by The Sherwin-Williams Company. ©2019 The Sherwin-Williams Company.

## ROPPE

Proven • Flooring • Experiences



Color collections, forecasts, descriptions and coordinating Roppe selections are in conjunction with The Sherwin-Williams Company.

Emily Kantz  
Interior Designer | Color Marketing & Design  
NCIDQ Certificate No. 28037 | LEED AP ID+C,  
EDAC | ASID | IIDA, Industry Partner



HEALTHCARE –  
NATURE COLLECTION –  
RUBBER

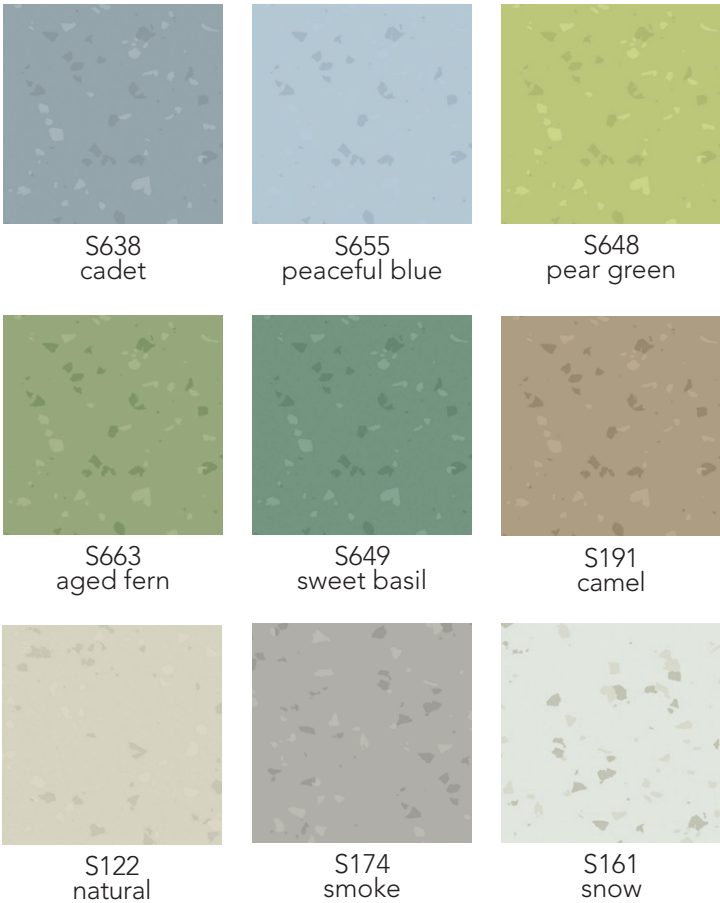
Biophilia inspired, this color palette takes color cues from the beauty of our natural environment. Calming tones of blue and green along with a pop of orange evokes a bright summer day.

SHERWIN-WILLIAMS®



Color samples shown approximate actual paint colors as closely as possible. The Cover The Earth logo and the Sherwin-Williams logo are trademarks owned or licensed by The Sherwin-Williams Company. ©2019 The Sherwin-Williams Company.

ROPPE®  
Proven • Flooring • Experiences •



HEALTHCARE –  
NATURE COLLECTION –  
WOOD & STONE

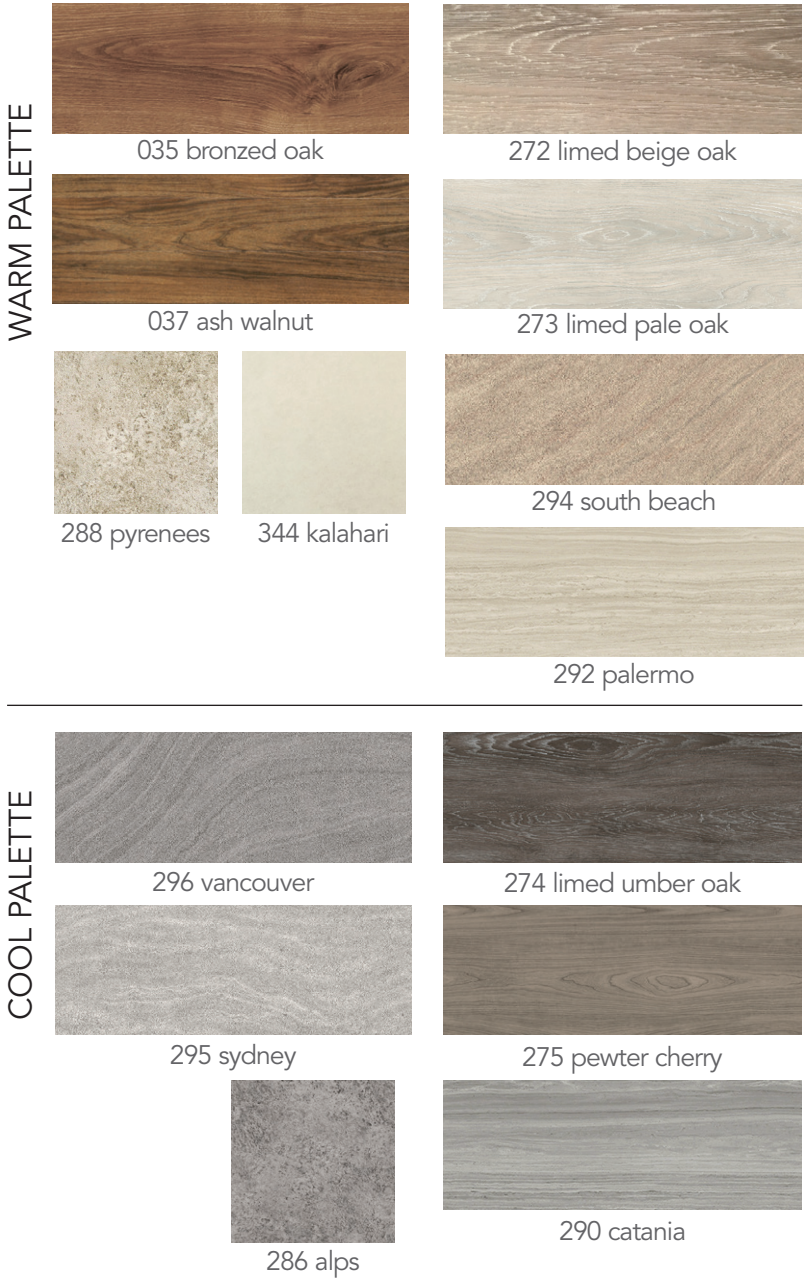
This mix of fresh nature inspired colors paired with stone and wood tones enliven an otherwise intimidating environment.

SHERWIN-WILLIAMS®



Color samples shown approximate actual paint colors as closely as possible. The Cover The Earth logo and the Sherwin-Williams logo are trademarks owned or licensed by The Sherwin-Williams Company. ©2019 The Sherwin-Williams Company.

ROPPE®  
Proven • Flooring • Experiences •



WARM PALETTE

COOL PALETTE



SENIOR LIVING –  
COZY COLLECTION

This palette provides a great balance of complex warm and cool tones to create an overall homey environment.

SHERWIN-WILLIAMS

SW 9174  
Moth Wing

SW 9050  
Vintage Vessel

SW 6340  
Baked Clay

SW 9103  
Farro

SW 9140  
Blustery Sky

SW 6116  
Tatami Tan

SW 6430  
Great Green

SW 9163  
Tin Lizzie

Color samples shown approximate actual paint colors as closely as possible. The Cover The Earth logo and the Sherwin-Williams logo are trademarks owned or licensed by The Sherwin-Williams Company. ©2019 The Sherwin-Williams Company.

ROPPE  
Proven • Flooring • Experiences •

WARM PALETTE

026 gingered beech

272 limed beige oak

029 toasted teak

294 south beach

287 dolomites

288 pyrenees

COOL PALETTE

274 limed umber oak

271 limed silver oak

275 pewter cherry

290 catania

344 kalahari

286 alps



CUSTOM WATERJET-  
CUT LOGOS AND  
CUSTOM COLORS

Build a school's brand with custom waterjet-cut logos and graphics as part of the flooring. Ideal for entryways, hallways and athletic facilities, logos can also feature custom colors to match your healthcare facility's palette. Minimum quantities apply.

Northern Timbers  
024 Golden Oak,  
029 Toasted Teak  
  
proudly made in the



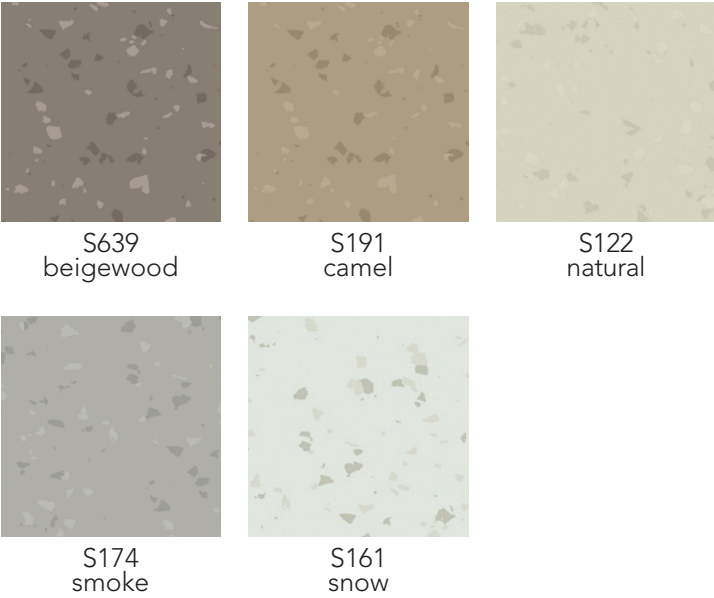
HEALTHCARE –  
**BALANCED BASICS –  
RUBBER**

These tones provide a solid foundation for any color palette.

**SHERWIN-WILLIAMS®**



Color samples shown approximate actual paint colors as closely as possible. The Cover The Earth logo and the Sherwin-Williams logo are trademarks owned or licensed by The Sherwin-Williams Company. ©2019 The Sherwin-Williams Company.



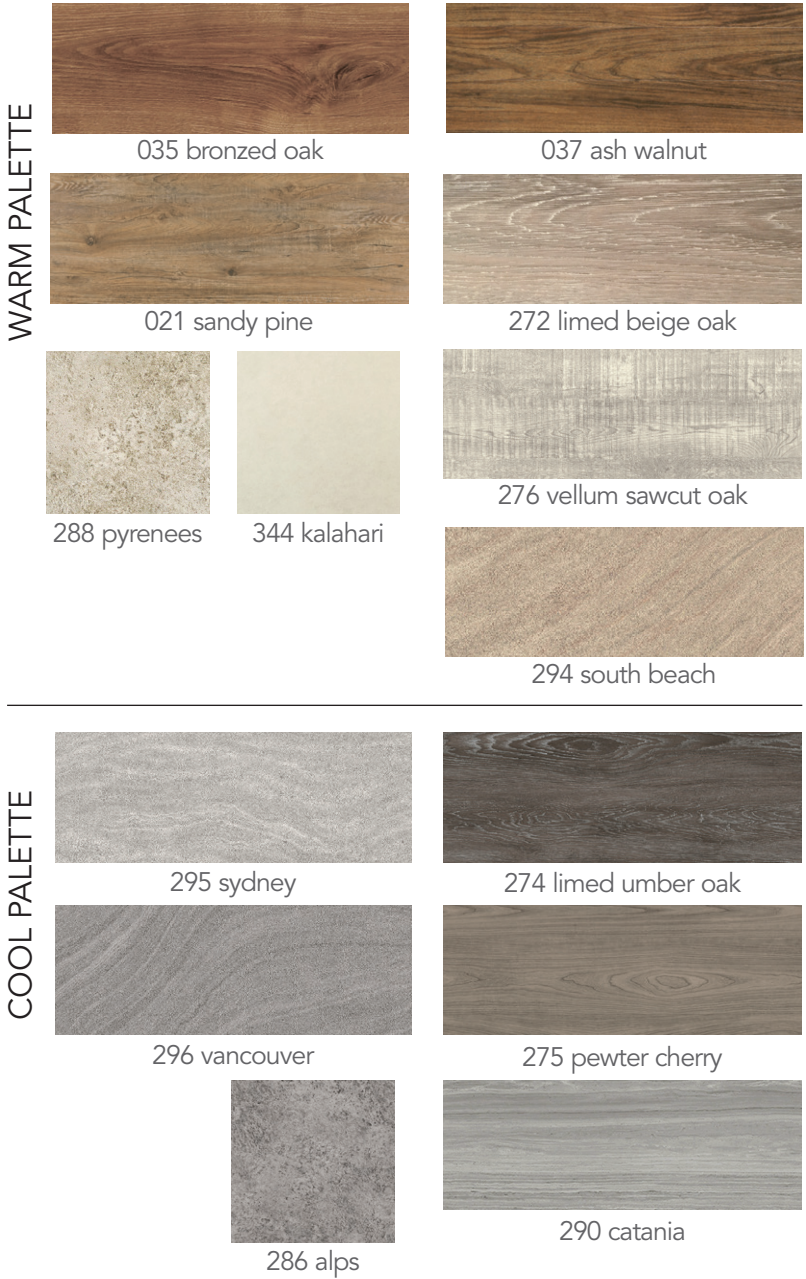
HEALTHCARE –  
**BALANCED BASICS –  
WOOD & STONE**

These tones provide a solid foundation for any color palette.

**SHERWIN-WILLIAMS®**



Color samples shown approximate actual paint colors as closely as possible. The Cover The Earth logo and the Sherwin-Williams logo are trademarks owned or licensed by The Sherwin-Williams Company. ©2019 The Sherwin-Williams Company.





# A COMPREHENSIVE TREATMENT PLAN

With so many time-tested products for healthcare, how does Roppe fit in with your future plans or projects?

Roppe goes well in many types of applications, including **hospitals, trauma centers, surgical centers, pathology labs, walk-in clinics, rehabilitation facilities, hospice care, assisted living, and nursing homes.**

Let the illustration spark your imagination for how Roppe fits into your healthcare environment, plus think about how other complementary Roppe products can tie it all together.



## Surgical Areas/Labs

Envire® Rubber Sheet and Tile, Rubber Tile, Health & Learning Vinyl Tile, Contours Profiled Wall Base, Rubber Wall Base



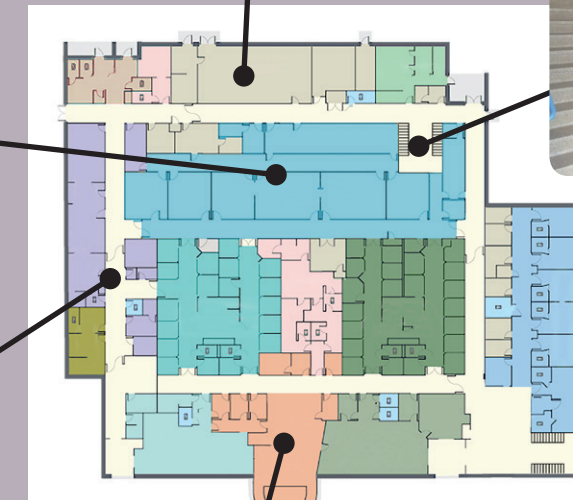
## Stairways

Rubber Stair Treads, Warning Tile, Rubber Tile, Rubber Wall Base



## Hallways

Envire® Rubber Sheet and Tile, Rubber Tile, ESD Rubber Tile, Northern Timbers, Northern Parallels, Contours Profiled Wall Base, Rubber Wall Base



## Patient & Visitor Areas

Envire® Rubber Sheet and Tile, Rubber Tile, Northern Timbers, Northern Parallels, Health & Learning Vinyl Tile, Contours Profiled Wall Base, Rubber Wall Base



## Rehabilitation Facilities/Multipurpose

Envire® Rubber Sheet and Tile, Rubber Tile, Recoil Fitness Flooring, Tuflex, Northern Timbers, Rubber Wall Base



# TAKE A FEW OF THESE & CALL US IN THE MORNING

Roppe sampling kits, folders, chain sets and sample swatches are always readily available to give you the details and product samples you need to find the perfect solutions.

Make sure your library and salespeople are equipped with the latest books or call Roppe customer service for more information or sampling tools, including those listed here.



## Envire® (sheet & tile)

- 41-671 Envire® brochure
- 117-671 FlashCove brochure
- 189-670 Envire®/FlashCove folder
- 264-670 Envire® 32-piece sets (2/cn)
- 266-670 Envire® container/card sets

## LVT (NT, NP, H&L)

- 108-671 Northern Timbers brochure
- 110-671 Northern Parallels brochure
- 191-670 NT/NP folder
- 109-671 H&L Vinyl Tile brochure
- 197-670 H&L Vinyl Tile folder

## Rubber Tile & Tread

- 73-671 Rubber Tile brochure
- 78-671 Rubber Tread brochure
- 107-671 70-color pocket guide
- 91-670 Marbleized Tile box
- 8-670 Rubber Tread chain
- 9-670 Rubber Tile chain

## Contours

- 40-671 Contours brochure
- 111-671 Contours color pocket guide
- 196-670 Contours folder
- 271-670 Contours Rapid Ship board
- 257-670 Contours strap set





# EXCELSIOR® PRODUCTS = PREVENTIVE MEDICINE

Flooring performance starts with sound installation, and it finishes with maintenance that is simple, safe and cost-effective. So why risk the side effects of anything less?

Excelsior® Installation & Maintenance products provide the compatibility and consistent performance that will get your flooring off on the right foot from day one, while delivering ongoing reliability and beauty decades down the road.







# OUR SPECIALISTS ARE ALWAYS ON CALL

Roppe is proud of our role in shaping the healthcare flooring industry. We look forward to working with you on your next spec or answering any questions you may have about how Roppe flooring can address your project needs.

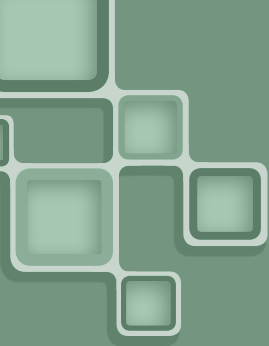
From **rubber tile and tread** ... to **Envire® rubber sheet and tile** ... to **Northern Timbers, Northern Parallels and Health & Learning Vinyl** ... to **Contours profiled wall base**, Roppe is ready to deliver proven flooring experiences to meet your healthcare expectations.



1.800.537.9527 | [www.roppe.com](http://www.roppe.com)







Your link to Roppe products and LEED® documentation.  
For more information, please visit: [roppe.com](http://roppe.com).

