

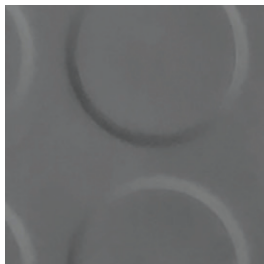


**ROPPE.**  
Proven. Flooring. Experiences.

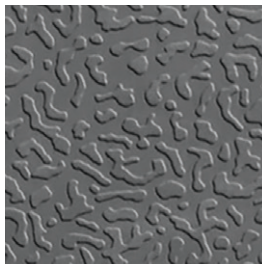
**RUBBER STAIR TREADS WITH  
DUPONT® KEVLAR™**

# RUBBER STAIR TREADS WITH DUPONT® KEVLAR™

AVAILABLE PROFILES



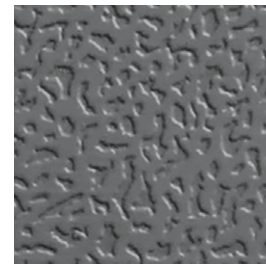
**92 Low-Profile**  
36"-72" in 6" increments



**93 Textured**  
36"-108" in 6" increments  
(includes relief cut)



**94 Square**  
36"-108" in 6" increments



**95 Hammered w/Riser**  
36"-108" in 6" increments  
(includes relief cut)



**96 Vantage w/Riser**  
36"-108" in 6" increments  
**97 Vantage Extended Depth**  
36"-72" in 6" increments  
**98 Vantage w/o Riser**  
36"-108" in 6" increments  
(all include relief cut)



**30/31 Diamond**  
30 available in 36"-108"  
in 6" increments  
31 available in 36"-72"  
in 6" increments  
(30 includes relief cut)



**40/41 Heavy-Duty (HD) Abrasive**  
36"-72" in 6" increments



**60/61 Heavy-Duty (HD) Smooth**  
36"-72" in 6" increments

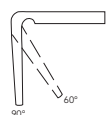
## TAPERED NOSE

Many Roppe treads have a tapered nose for a clean fit. They help reduce tripping hazards while providing a better finished look.



## RELIEF CUT

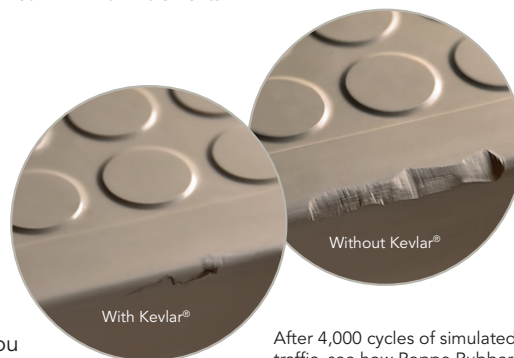
Many of our treads include a molded relief cut that aids in the installation of our treads on today's angled stairs.



Custom lengths can be ordered in 6" increments up to 9 ft. (2.73m) in Textured, Hammered, Vantage, Square and Diamond designs.

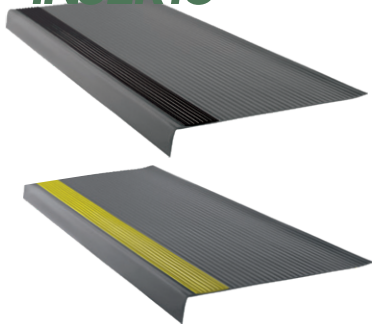


Roppe Rubber Stair Treads with Kevlar® feature a 25-year warranty to help you create a design that looks beautiful for decades.



After 4,000 cycles of simulated foot traffic, see how Roppe Rubber Stair Treads with Kevlar® compared to our standard rubber treads.

## RUBBER INSERTS



Rubber inserts are **not available** for the following:

- Rubber treads #40/41, #50/51, #70/71 and #80/81
- Vinyl treads #16/17



Designed for use in our rubber or vinyl stair tread lines, ribbed or smooth rubber inserts provide a tactile surface that's durable and easy to clean. The low-profile ribbed surface, or smooth option, are available in 2" strips and offered in colors that coordinate with many of our other product lines.

## FOR VISUALLY IMPAIRED

Designed to improve safety for the visually impaired, Roppe stair treads are available with grit strips and in contrasting colors. In addition, rubber detectable warning tiles help signal changes in elevation. Available in 3/4" or 2" width.

L – safety yellow  
K – black  
W – pebble white  
G – ocean gray



T – teak brown  
E – beige  
A – galley red  
D – glow strip\*

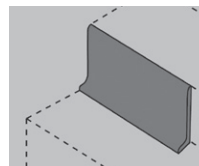
\*Glow Strips are **not available** for the following:

- Rubber treads #40/41, #50/51, #70/71 and #80/81
- Vinyl treads #16/17 and #18/19

## TREAD ACCESSORIES

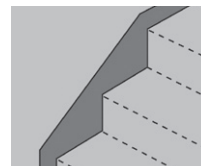
Coordinating rubber risers, stringers and landing mats/tiles do not feature the addition of DuPont™ Kevlar® Fiber since the standard formulation shares a life-cycle of approximately 40-years. There is no need to have a formula that is more durable.

### RUBBER & VINYL RISERS



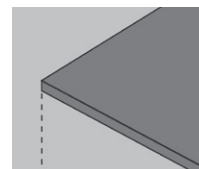
Risers cover the rear edge of tread to eliminate labor-intensive hand trimming. They are sized to fit most stair risers, but can be trimmed to fit any height (7" or less) or length. Risers are available in 7" x 50' vinyl coils and 7" x coordinating rubber tread length pieces. All risers are .100" thick. Coordinating colors for each tread line are available at a Single Price Point.

### RUBBER & VINYL STRINGERS



Stringers are available in 10" x 50' vinyl and 10" x 72" or 12" x 72" rubber, and in all of the colors in coordinating tread lines at a Single Price Point. Stringers are .080" thick.

### RUBBER LANDING MATS/TILES



Note: Rubber warning tiles can be used to alert the visually impaired to approaching stairways. Size: 1/8" gauge, 12" x 12" tiles. In addition, all Roppe 50cm tiles can be used on landings. Diamond and Smooth landing mats are available in 27" x 27", plus 36" x 36" in Smooth.

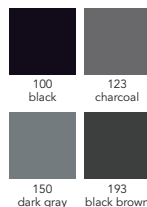
smooth and diamond landing mats



### PERFORMANCE COMPOUNDS

Roppe Performance Compound Rubber Stair Treads are homogenous rubber treads specifically designed for use in areas that may be subject to oil, grease and other petroleum hydrocarbons. Ideal applications include automotive (repair shops, quick lube facilities and automobile storage), industrial (manufacturing facilities, refining facilities and material storage) and transportation (repair facilities, garages and equipment storage).

Roppe Performance Compound Rubber Stair Treads are **only available** in the following solid colors:



# RUBBER STAIR TREADS WITH DUPONT® KEVLAR™

## SOLID COLORS

For all rubber tread profiles.



Kevlar® is an innovative, lightweight material used in military vehicles, suspension bridges, ballistic body armor – and for the first time ever, rubber stair treads.

Roppe engineered Rubber Stair Treads with Kevlar® because your stairs are being put to the test every single day. From normal wear and tear to downright abuse, Roppe Rubber Stair Treads with Kevlar® will resist damage that detracts from the appearance and safety of your stairs – not just for a few years. For decades.

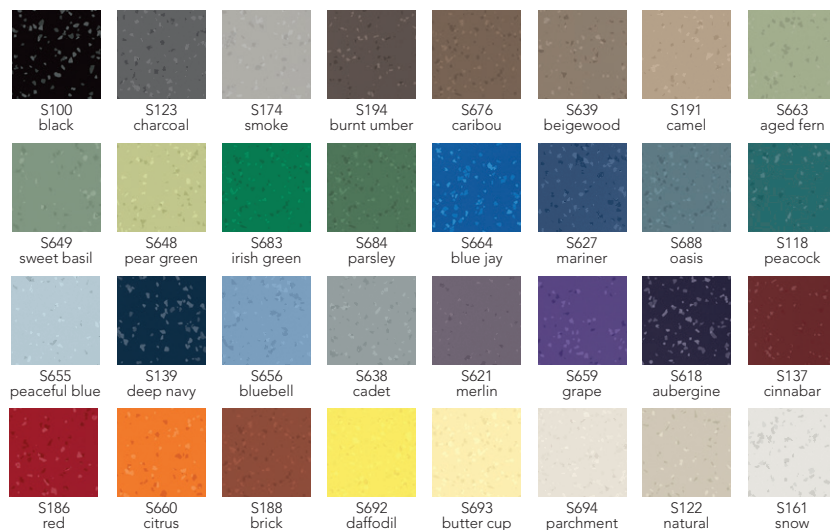
**ROPPE**  
Proven. Flooring. Experiences.

|                    |                    |                     |                    |                    |                   |                   |                      |
|--------------------|--------------------|---------------------|--------------------|--------------------|-------------------|-------------------|----------------------|
|                    |                    |                     |                    |                    |                   |                   |                      |
| 100<br>black       | 667<br>galactic    | 668<br>night hawk   | 123<br>charcoal    | 150<br>dark gray   | 177<br>steel blue | 669<br>battleship | 670<br>asphalt       |
|                    |                    |                     |                    |                    |                   |                   |                      |
| 175<br>slate       | 114<br>lunar dust  | 129<br>dolphin      | 178<br>pewter      | 174<br>smoke       | 671<br>somber     | 672<br>ashen      | 673<br>greige        |
|                    |                    |                     |                    |                    |                   |                   |                      |
| 193<br>black brown | 110<br>brown       | 147<br>light brown  | 194<br>burnt umber | 674<br>clove       | 675<br>biscotti   | 676<br>caribou    | 639<br>beigewood     |
|                    |                    |                     |                    |                    |                   |                   |                      |
| 140<br>fawn        | 677<br>gingerbread | 678<br>mochaccino   | 679<br>sepia       | 191<br>camel       | 680<br>latte      | 632<br>flax       | 681<br>buff          |
|                    |                    |                     |                    |                    |                   |                   |                      |
| 663<br>aged fern   | 649<br>sweet basil | 169<br>hunter green | 682<br>evergreen   | 683<br>irish green | 684<br>parsley    | 685<br>arugula    | 648<br>pear green    |
|                    |                    |                     |                    |                    |                   |                   |                      |
| 664<br>blue jay    | 627<br>mariner     | 686<br>stormy sky   | 687<br>deep fog    | 688<br>oasis       | 118<br>peacock    | 689<br>sea glass  | 655<br>peaceful blue |
|                    |                    |                     |                    |                    |                   |                   |                      |
| 187<br>blue        | 139<br>deep navy   | 656<br>bluebell     | 638<br>cadet       | 197<br>iceberg     | 621<br>merlin     | 659<br>grape      | 618<br>aubergine     |
|                    |                    |                     |                    |                    |                   |                   |                      |
| 690<br>carob       | 137<br>cinnabar    | 186<br>red          | 660<br>citrus      | 188<br>brick       | 691<br>espresso   |                   |                      |
|                    |                    |                     |                    |                    |                   |                   |                      |
| 692<br>daffodil    | 693<br>butter cup  | 694<br>parchment    | 122<br>natural     | 641<br>moonrise    | 170<br>white      | 695<br>calla lily | 161<br>snow          |



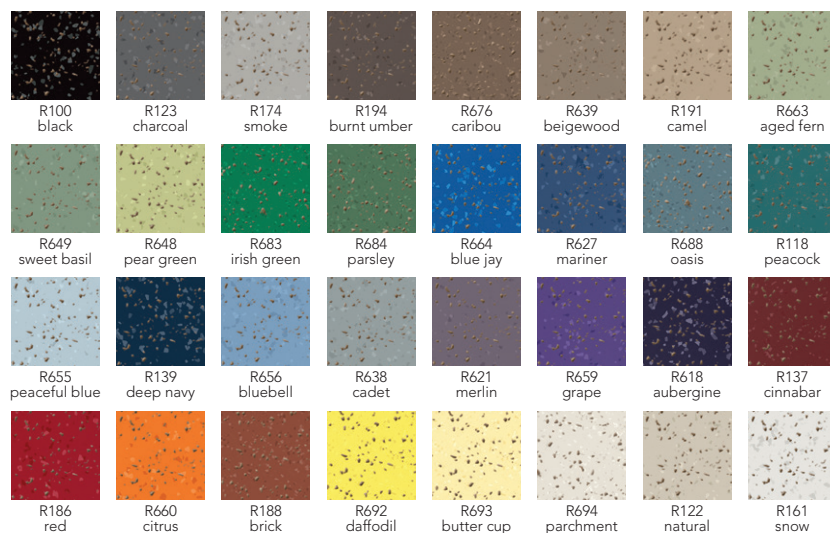
# SYMMETRY COLORS

For all rubber tread profiles excluding Rib tread.



# RENEW COLORS

For Smooth, Hammered and Textured rubber tread profiles.



DuPont™ and Kevlar® are trademarks or registered trademarks of affiliates of DuPont de Nemours, Inc. used under license by Roppe Holding Company.

We do our very best to accurately represent the rich color palette of each of our flooring products in both printed and electronic marketing materials. However, it is recommended that a sample be requested for sign-off prior to an order being placed or a specification being written to ensure 100% satisfaction.

# RUBBER STAIR TREADS WITH DUPONT® KEVLAR™



DuPont™ and Kevlar® are trademarks or registered trademarks of affiliates of DuPont de Nemours, Inc. used under license by Roppe Holding Company.



## Rubber Stair Treads

Free of Red List chemicals, PVC, phthalates and halogens. The ReNew palette is also cork-infused and contains 13% bio-based content from rapidly renewable resources.



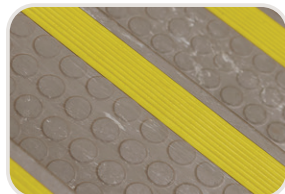
## Sustainable Solutions

Made in the U.S.A. and meets FloorScore®, NSF/ANSI 332 Level 1 and CHPS criteria. Rubber Stair Treads and Rubber Stair Treads with DuPont™ Kevlar® meet GREENGUARD GOLD criteria.



## Decades of Durability

Roppe Rubber Stair Treads with Kevlar® feature a 25-year warranty to help you create a design that looks beautiful for decades.



## Safety Inserts and Strips

Safety abrasive strips standard on some product lines. Ribbed or smooth rubber inserts and custom strips also can be added for extra traction or to aid the visually impaired. Available with self-illuminating photo-luminescent abrasive glow strips for added safety in darkened conditions.



## Variety of Profiles

Available in nine different Rubber Stair Tread profiles and a variety of lengths. Custom lengths can be ordered in 6" increments up to 9 ft. (2.73m) in Textured, Hammered, Vantage, Square and Diamond designs.



## Single Price Point

All colors available at a Single Price Point within your selected palette. ReNew palette is available in Smooth, Hammered and Textured profiles only.



Installation



Roppe products are easy to install & maintain using our Excelsior™ Products. Visit [roppe.com](http://roppe.com) for the most current recommendations.



Maintenance

Find the most current lineup of Roppe product folders online at [roppe.com](http://roppe.com).



Digital Folders



Health Product Declaration® for Rubber Stair Treads is available at [roppe.com](http://roppe.com)



125-671 2/25