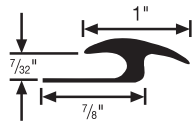
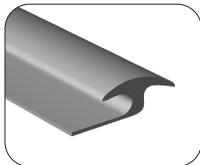


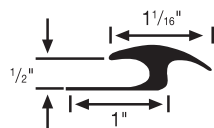
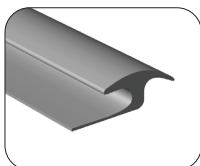
RUBBER ACCESSORIES

ADAPTER & TRANSITIONS



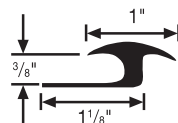
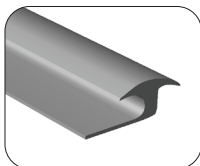
#50 tile/carpet joiner 7/32"

- Provides smooth transition between carpet and tile
- Minimum Installation Radius: 5 ft.
- 10 9-ft. secs. per tube (90 ft.)



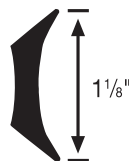
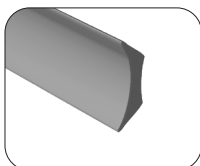
#56 tile/carpet joiner 1/2"

- Similar to #50; wider opening fits wood and ceramic tile
- Minimum Installation Radius: 5 ft.
- 10 9-ft. secs. per tube (90 ft.)



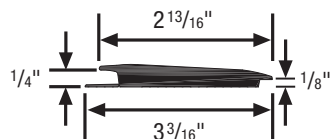
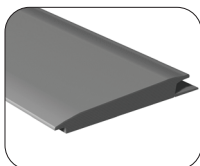
#60 tile/carpet joiner 3/8"

- Similar to #50; wider opening fits wood and ceramic tile
- Minimum Installation Radius: 5 ft.
- 10 9-ft. secs. per tube (90 ft.)



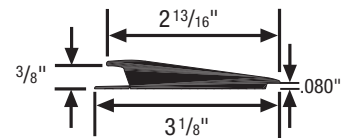
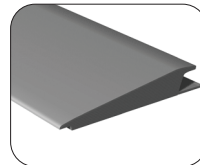
#44 fillet strip

- Superb backing for flashing up the wall; color may vary due to 100% recycled content
- Minimum Installation Radius: 1 inch
- 16 9-ft. pcs. per ctn. (144 ft.)



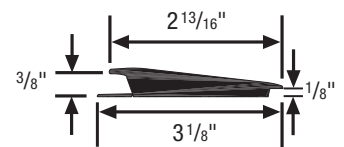
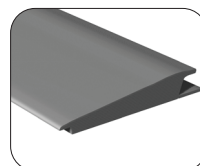
#65 rolling traffic transition 1/4" to 1/8"

- Transitions 1/4" to 1/8" materials
- Minimum Installation Radius: 12 ft.
- 10 9-ft. secs. per tube (90 ft.)



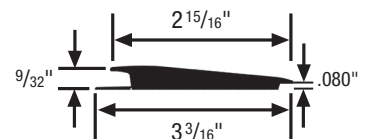
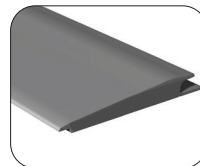
#66 rolling traffic transition 3/8" to .080"

- Transitions 3/8" to .080" materials
- Minimum Installation Radius: 12 ft.
- 10 9-ft. secs. per tube (90 ft.)



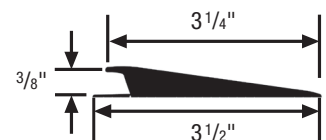
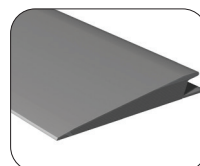
#67 rolling traffic transition 3/8" to 1/8"

- Transitions 3/8" to 1/8" materials
- Minimum Installation Radius: 12 ft.
- 5 9-ft. secs. per tube (45 ft.)



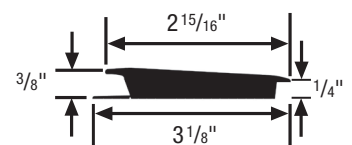
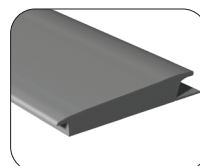
#73 rolling traffic transition 1/4" to .080"

- Transitions 1/4" to .080" materials
- Minimum Installation Radius: 12 ft.
- 10 9-ft. secs. per tube (90 ft.)



#74 rolling traffic transition 3/8"

- Transitions 3/8" materials to subfloor
- Minimum Installation Radius: 12 ft.
- 10 9-ft. secs. per tube (90 ft.)



#75 rolling traffic transition 3/8" to 1/4"

- Transitions 3/8" to 1/4" materials
- Minimum Installation Radius: 12 ft.
- 10 9-ft. secs. per tube (90 ft.)

