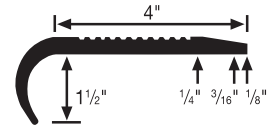
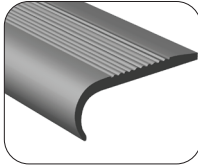
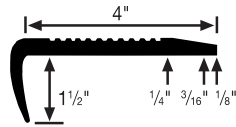
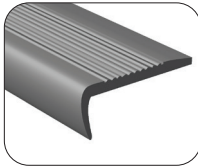


RUBBER ACCESSORIES

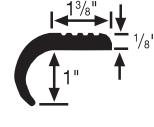
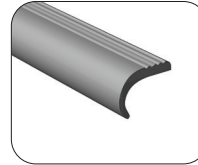
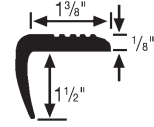
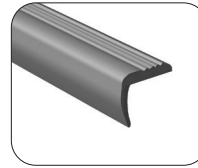
NOSINGS



#1 & #2 commercial stair nosing

- For butting to resilient flooring. 2" abrasive strip available on #1 only (excludes glow strip); ribbed safety surface
- Minimum Installation Radius: 11 ft.
- 5 9-ft. secs. per tube (45 ft.)

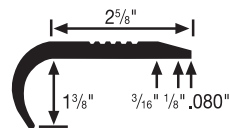
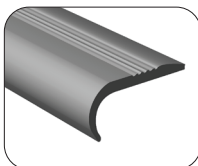
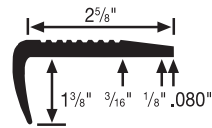
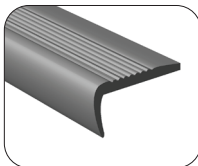
ADA



#5 & #6 domestic stair nosing

- For very light-duty applications
- Minimum Installation Radius: 11 ft.
- 10 9-ft. secs. per tube (90 ft.)

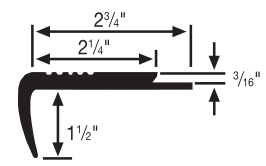
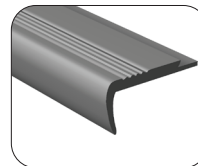
ADA



#3 & #4 residential stair nosing

- Same features as #1 and #2 but lighter weight, smaller step area
- Minimum Installation Radius: 11 ft.
- 10 9-ft. secs. per tube (90 ft.)

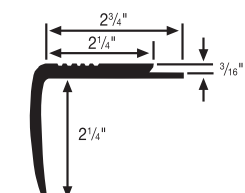
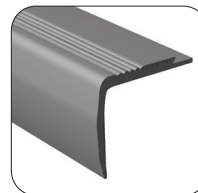
ADA



#7 underlap carpet nosing

- For low pile carpet; standard nose (1-1/2")
- Minimum Installation Radius: 11 ft.
- 10 9-ft. secs. per tube (90 ft.)

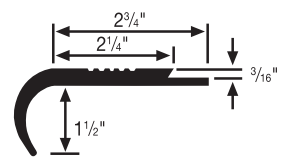
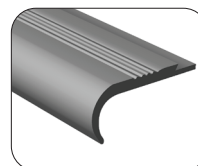
ADA



#m-07 modified underlap stair nosing

- Same as #7 above except longer nose (2-1/4")
- Minimum Installation Radius: 12 ft.
- 5 9-ft. secs. per tube (45 ft.)

ADA



#8 underlap stair nosing

- Flange-type design for 3/16" low pile carpet; ribbed
- Minimum Installation Radius: 11 ft.
- 10 9-ft. secs. per tube (90 ft.)

ADA