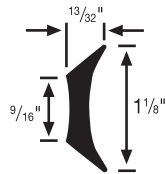
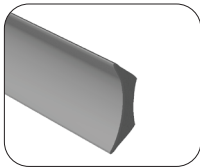


VINYL ACCESSORIES

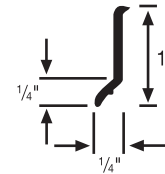
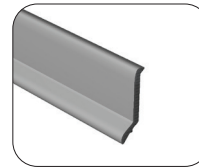
FILLETS & TUB MOLDINGS



#167 fillet strip

- Superb backing for flashing up the wall color may vary due to 100% recycled content; angle 45°
- Minimum Installation Radius: 1 ft.
- 5 20-ft. coils per ctn. (100 ft.)

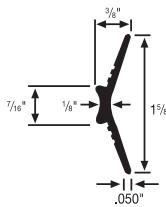
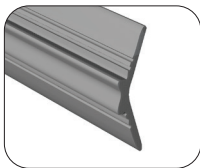
ADA



#190 & #191 tub molding 1" (#190) 1-1/2" (#191)

- High-gloss finish, self-stick backing, 1" or 1-1/2" cove for tubs, counters, shelves; colors Snow and Almond only; angle 45°
- Minimum Installation Radius: 1 ft.
- 24 5-ft. pcs. per ctn. (120 ft.)

ADA

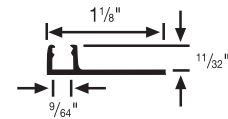
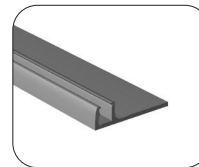


#188 cove stick

- Superb backing for flashing up the wall color Neutral only; angle 45°
- Minimum Installation Radius: 2 ft.
- 100 5-ft. pcs. per ctn. (500 ft.)

ADA

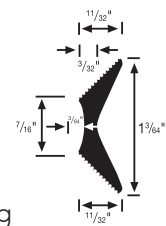
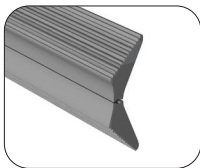
TRACKS



#155 single flange track

- Works with #152, #154, #175 and #179; color Black only
- Minimum Installation Radius: Zero
- 10 12-ft. pcs. per ctn. (120 ft.)

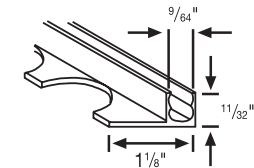
ADA



#189 fillet molding

- Superb backing for flashing up the wall color Snow only; angle 45°
- Minimum Installation Radius: 1 ft.
- 25 5-ft. pcs. per ctn. (125 ft.)

ADA

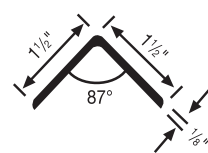
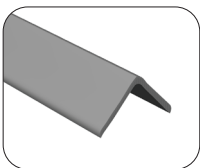


#178 FLEXI-TRACK® single flange track

- Works with #152, #154, #175 and #179; flexible, contours easily; color Black only
- Minimum Installation Radius: 6 ft.
- 20 12-ft. pcs. per ctn. (240 ft.)

ADA

CORNER GUARD

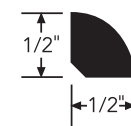
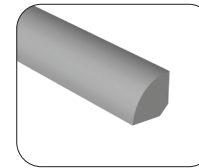


#166 corner guard 1/8" length: 54" (standard)

- 1-1/2" returns; standard length 54" (special order to 9 ft., minimum quantities required)
- Minimum Installation Radius: Not Applicable.
- 12 54" pcs. per ctn. (54 ft. on standard orders)

ADA

WALL ACCESSORIES



#350 quarter round

- Designed to outperform wood to complement a tread, tile or base job
- Minimum Installation Radius: 3 ft.
- 10 12-ft. pcs. per ctn. (#350) or 40' coil (#C350)

ADA