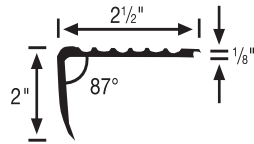
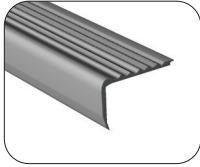


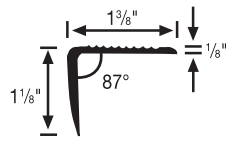
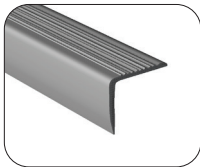
VINYL ACCESSORIES

NOSINGS



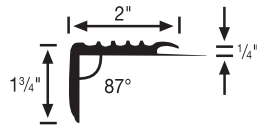
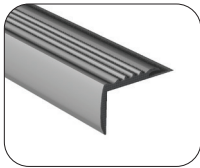
#202 overlap stair nosing 1/8"

- Square nosing; ribbed safety surface
- Minimum Installation Radius: 11 ft.
- 10 12-ft. secs. per ctn. (120 ft.)



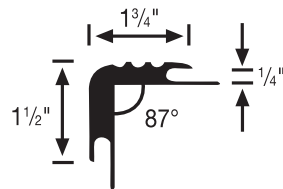
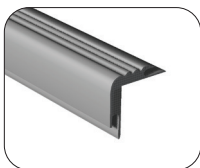
#203 domestic stair nosing 1/8"

- For light-duty applications; installs over vinyl tile or sheet goods
- Minimum Installation Radius: 11 ft.
- 5 12-ft. secs. per ctn. (60 ft.)



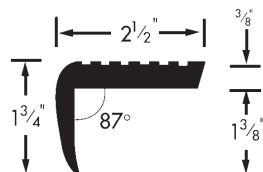
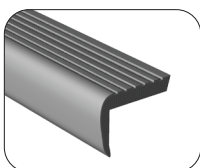
#204 undercut carpet nosing 1/4"

- Heavy-duty for 1/4" and 5/16" carpet
- Minimum Installation Radius: 11 ft.
- 5 12-ft. secs. per ctn. (60 ft.)



#206 double undercut stair nosing 1/4"

- For 1/4" and 5/16" carpet
- Minimum Installation Radius: 11 ft.
- 5 12-ft. secs. per ctn. (60 ft.)

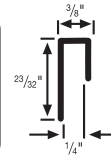
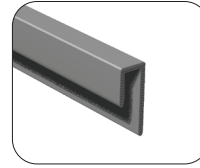


#207 vinyl 3/8" butt stair nosing

- 3/8" butt stair nosing for carpet and Rop-Cord® tile
- Minimum Installation Radius: 10 ft., color Black only
- 5 12-ft. secs. per ctn. (60 ft.)

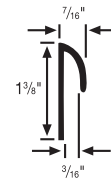
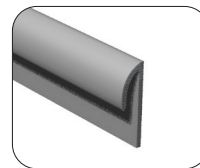


COVE CAPS



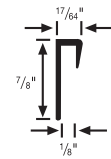
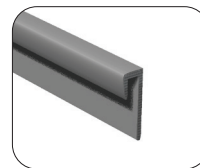
#158 cove cap (square) 1/4"

- Cap for coved carpets and wall paneling
- Minimum Installation Radius: 1 ft.
- 40 12-ft. secs. per ctn. (480 ft.)



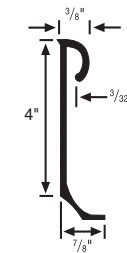
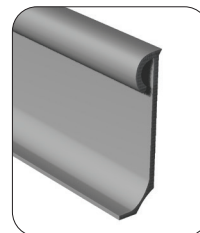
#161 carpet cove trim

- For coved carpet; undercut 3/16" (flexible)
- Minimum Installation Radius: 10 ft.
- 20 12-ft. secs. per ctn. (240 ft.)



#165 cove cap (square) 1/8"

- Cap for coved sheet vinyl; undercut 1/8"
- Minimum Installation Radius: 1 ft.
- 50 12-ft. secs. per ctn. (600 ft.)



#193 vinyl flash cap height: 4"

- Vinyl fillet strip and cove cap in one product; use for vinyl sheet or carpet up to 1/4" thick
- Minimum Installation Radius: 4 inches
- 20 5-ft. secs. per ctn. (100 ft.)

