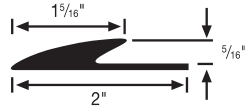
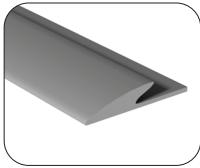


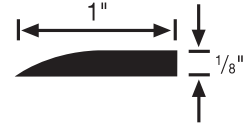
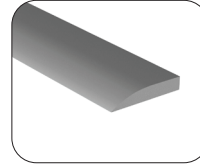
VINYL ACCESSORIES

REDUCERS



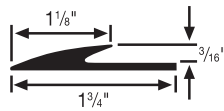
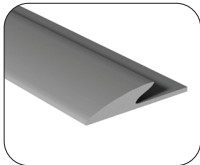
#156 glue-down reducer 5/16"

- 5/16" butting gauge undercut; long flange, smooth taper
- Minimum Installation Radius: 18 ft.
- 5 12-ft. secs. per ctn. (60 ft.)



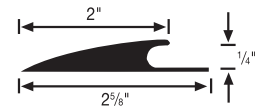
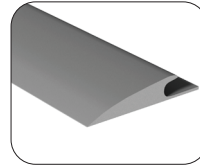
#172 tile reducer 1/8"

- Beveled edge for resilient flooring; 1/8" butting edge
- Minimum Installation Radius: 18 ft.
- 50 3-ft. secs. per ctn. (150 ft.)



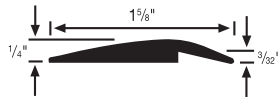
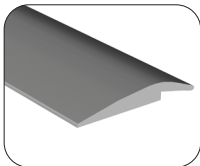
#160 glue-down reducer 3/16"

- Undercut 3/16"; flange and transition combined; smooth transition
- Minimum Installation Radius: 10 ft.
- 20 12-ft. secs. per ctn. (240 ft.)



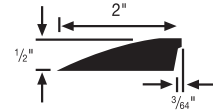
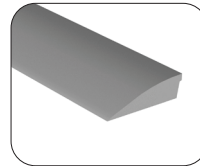
#174 glue-down reducer 1/4"

- Undercut 1/4" with 2" transition
- Minimum Installation Radius: 11 ft.
- 10 12-ft. secs. per ctn. (120 ft.)



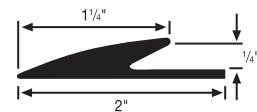
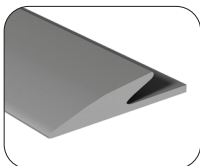
#168 underslung reducer

- Binder-bar edging for resilient flooring; undercut .115" for use with 1/16" to 1/8" material
- Minimum Installation Radius: 3 ft.
- 2 35-ft. coils per ctn. (70 ft.)



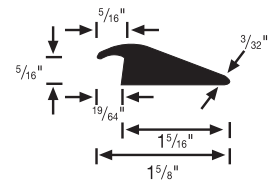
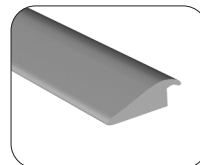
#176 multi-use reducer 1/2"

- For carpet, ceramic tile or wood floors
- Minimum Installation Radius: 6 ft.
- 10 12-ft. secs. per ctn. (120 ft.)



#169 glue-down reducer 1/4"

- 1/4" undercut; long flange, smooth taper
- Minimum Installation Radius: 10 ft.
- 5 12-ft. secs. per tube (60 ft.)



#196 carpet reducer 3/8"

- Designed especially for 3/8" carpet
- Minimum Installation Radius: 10 ft.
- 10 12-ft. secs. per ctn. (120 ft.)

